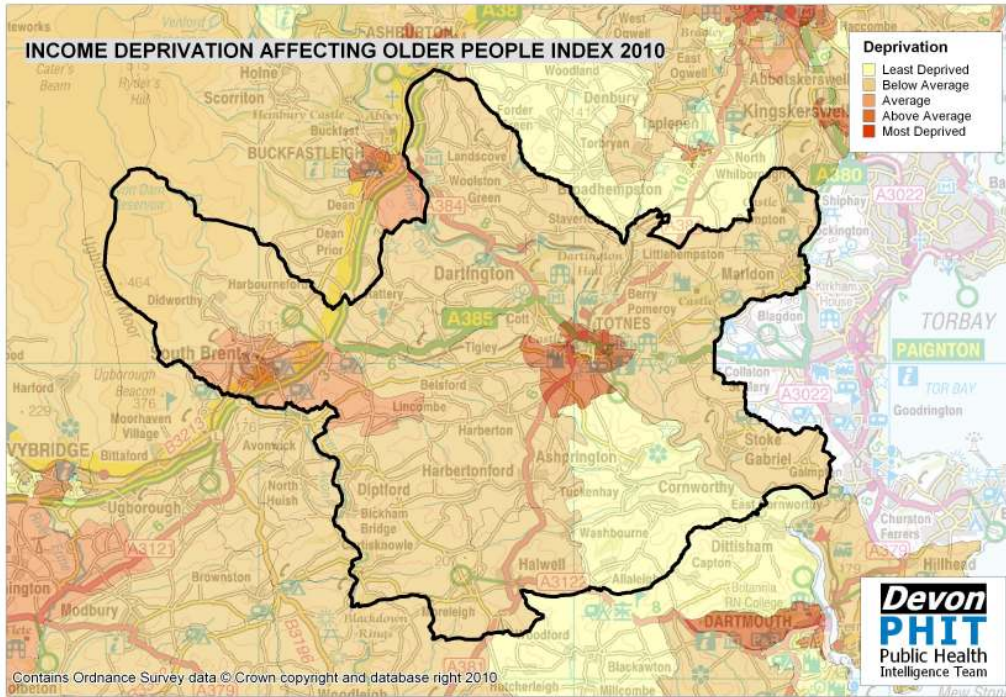
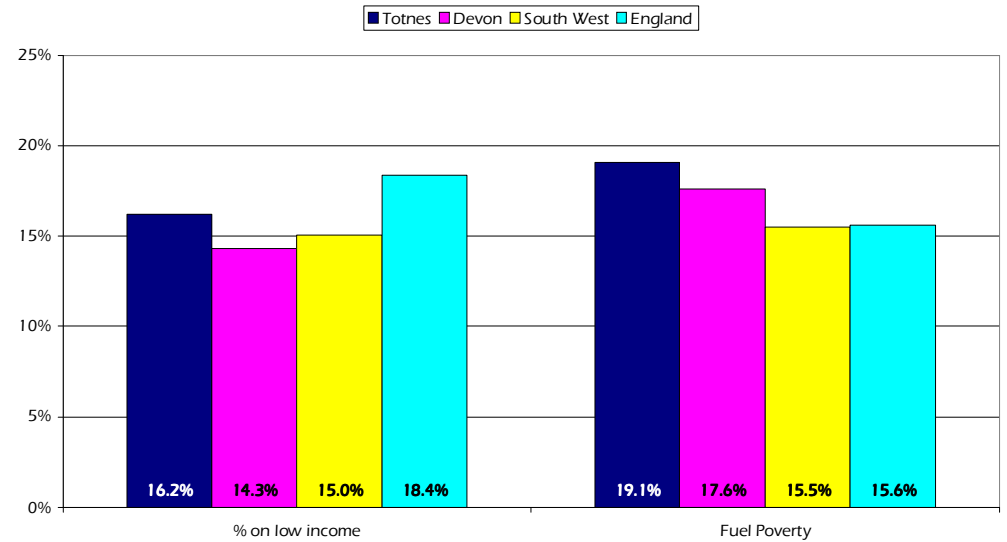


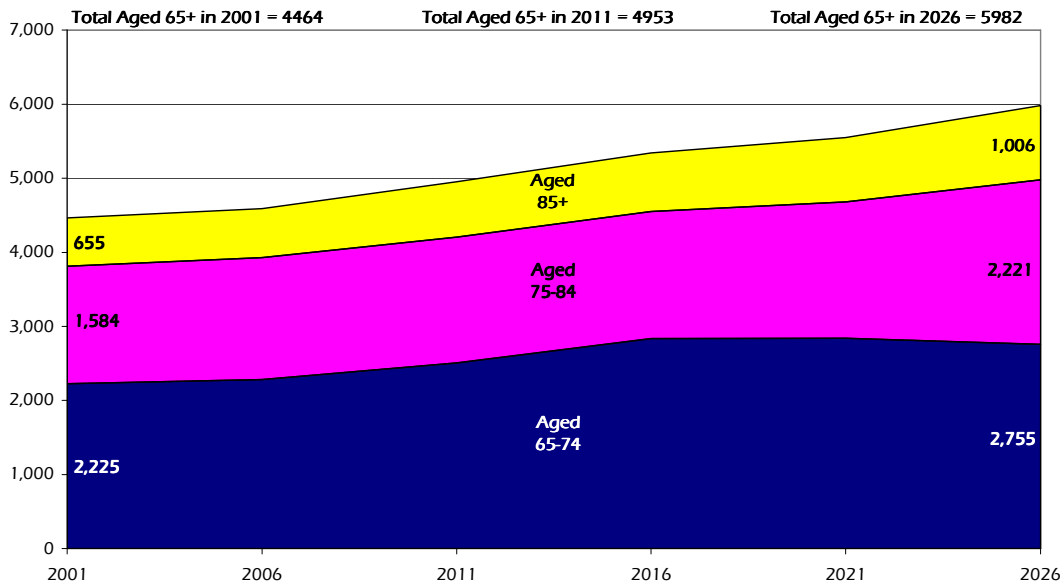
# Totnes Older People Profile 2010/11



Older People on Low Income and Household Fuel Poverty by Area



Projected Population Growth, Aged 65 and over, 2001 to 2026



Estimated number of people with selected health conditions, aged 65 years and over

Health Problem	2011	2016	2021	2026
Depression	428	457	473	510
Severe Depression	137	147	152	169
Dementia	331	348	376	430
Longstanding health condition caused by heart attack	242	262	273	298
Longstanding health condition caused by stroke	115	124	131	144
Longstanding health condition caused by bronchitis/emphysema	83	90	94	102
Fall in last 12 months	1,345	1,435	1,505	1,642
Regular continence problems	822	877	918	1,007
Moderate or severe visual impairment	444	470	495	554
Moderate or severe hearing impairment	2,170	2,283	2,424	2,761
Learning Disability	102	110	115	123