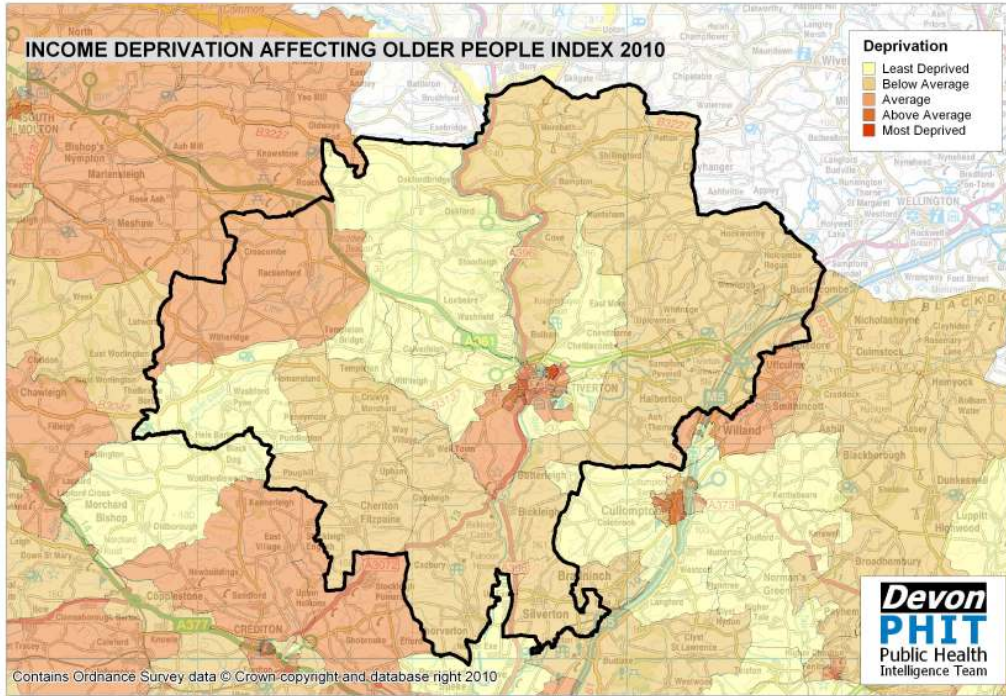
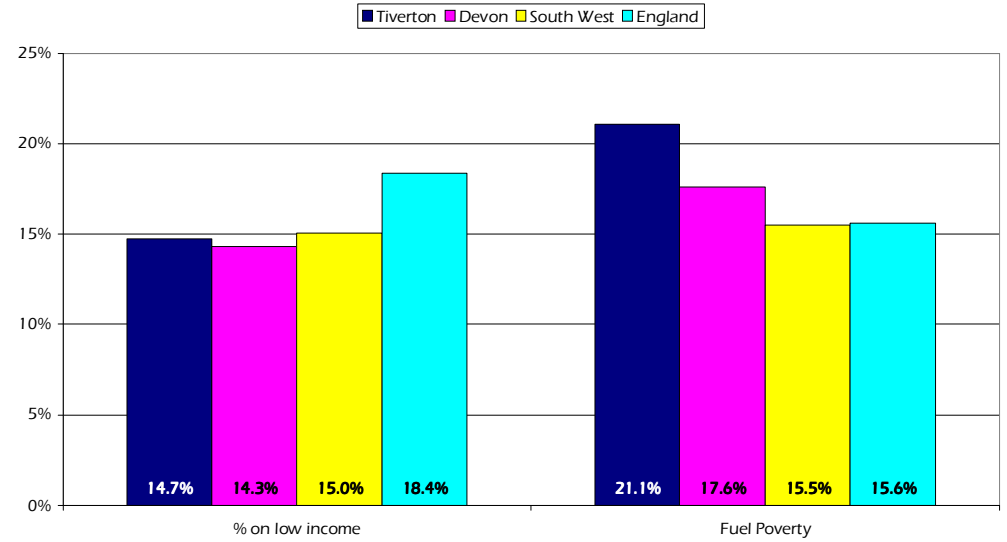


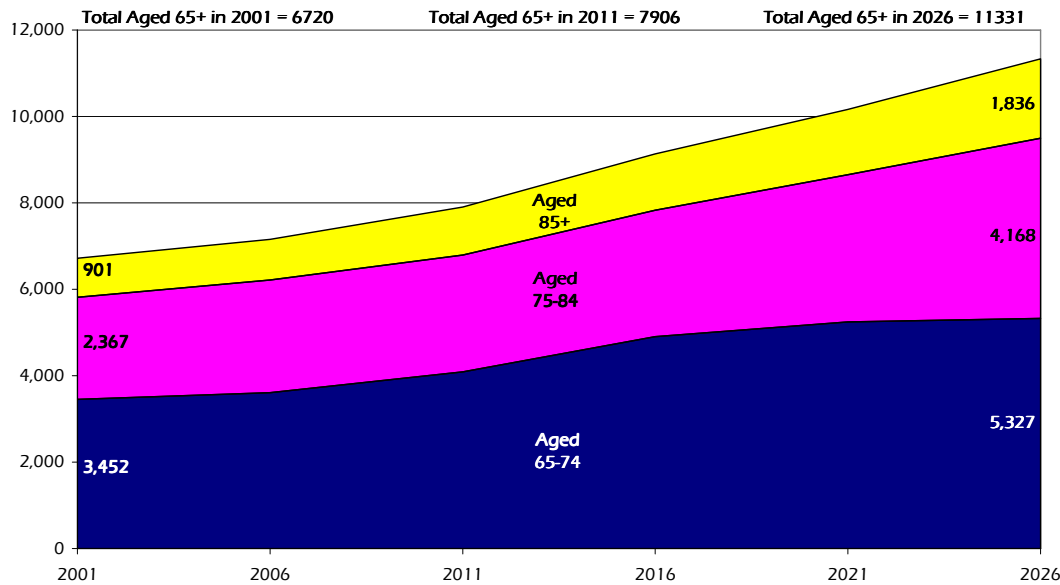
# Tiverton Older People Profile 2010/11



Older People on Low Income and Household Fuel Poverty by Area



Projected Population Growth, Aged 65 and over, 2001 to 2026



Estimated number of people with selected health conditions, aged 65 years and over

Health Problem	2011	2016	2021	2026
Depression	679	780	867	967
Severe Depression	218	251	279	320
Dementia	509	579	671	794
Longstanding health condition caused by heart attack	389	447	499	560
Longstanding health condition caused by stroke	184	213	239	271
Longstanding health condition caused by bronchitis/emphysema	133	155	172	192
Fall in last 12 months	2,114	2,428	2,732	3,090
Regular continence problems	1,300	1,490	1,671	1,891
Moderate or severe visual impairment	702	799	904	1,043
Moderate or severe hearing impairment	3,412	3,864	4,403	5,167
Learning Disability	164	189	211	234