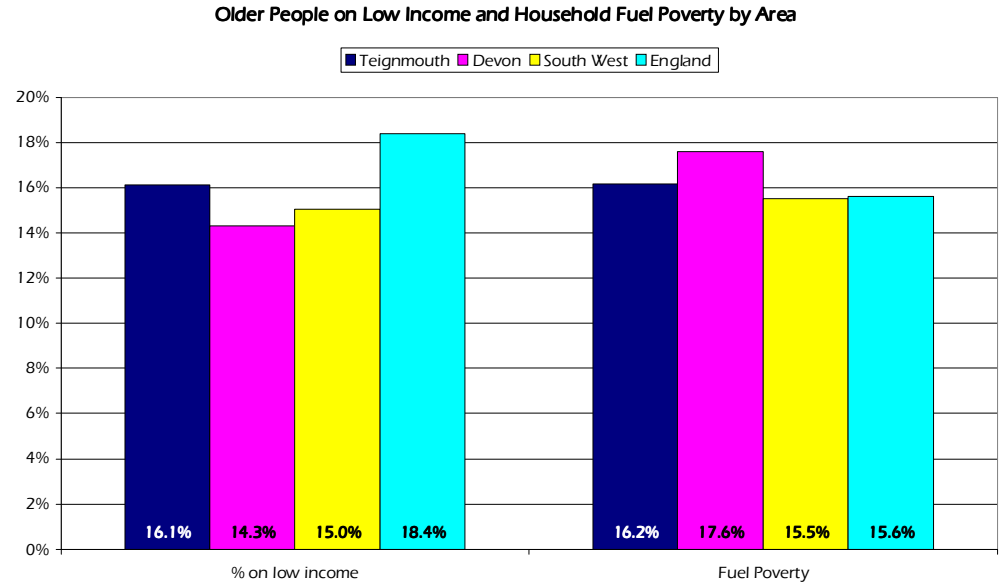
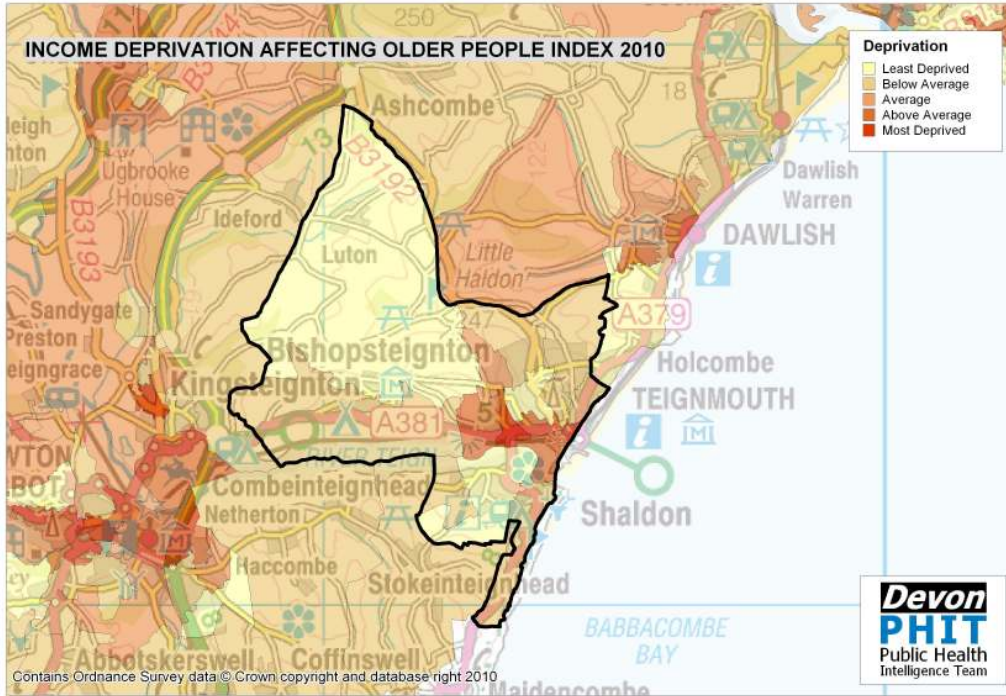
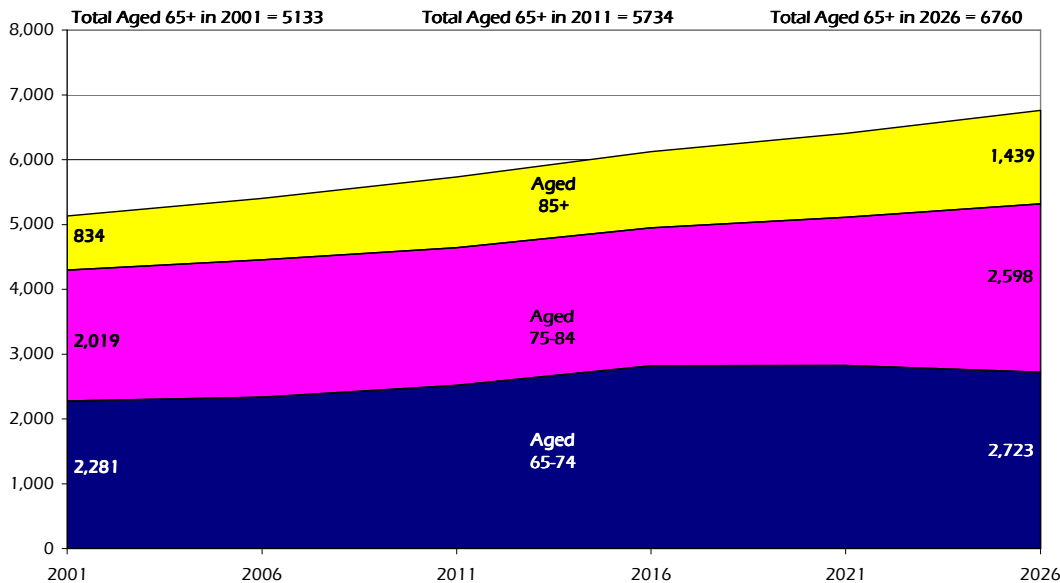


# Teignmouth Older People Profile 2010/11



**Projected Population Growth, Aged 65 and over, 2001 to 2026**



**Estimated number of people with selected health conditions, aged 65 years and over**

Health Problem	2011	2016	2021	2026
Depression	507	539	563	595
Severe Depression	165	174	183	198
Dementia	426	449	485	535
Longstanding health condition caused by heart attack	282	300	315	335
Longstanding health condition caused by stroke	133	141	149	160
Longstanding health condition caused by bronchitis/emphysema	95	102	106	112
Fall in last 12 months	1,617	1,721	1,816	1,939
Regular continence problems	993	1,055	1,113	1,191
Moderate or severe visual impairment	540	568	602	653
Moderate or severe hearing impairment	2,727	2,858	3,057	3,354
Learning Disability	118	126	132	138