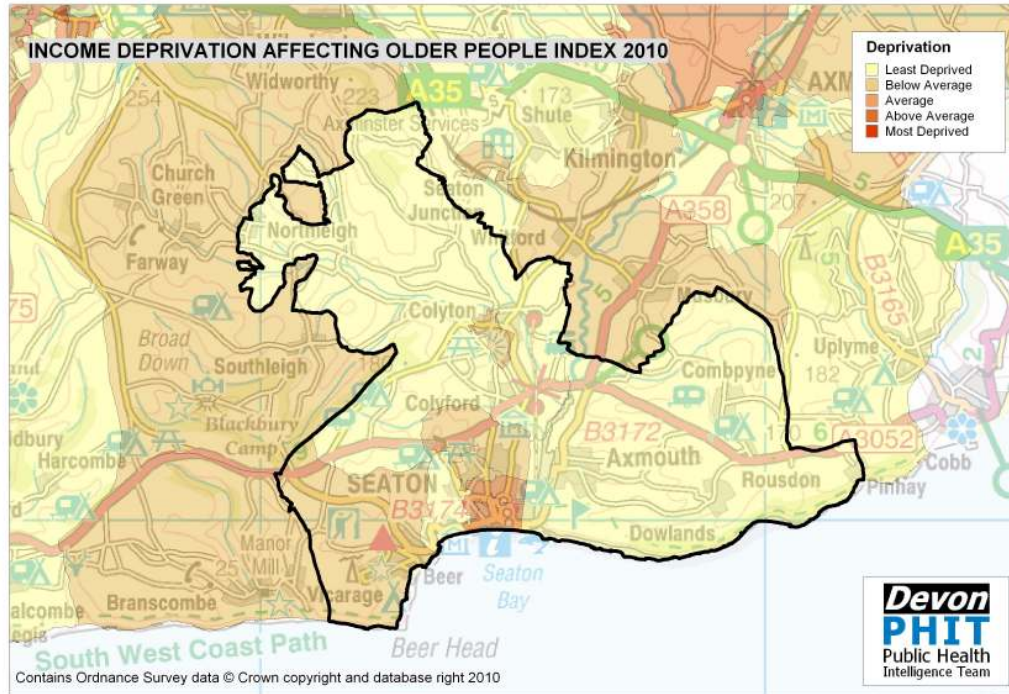
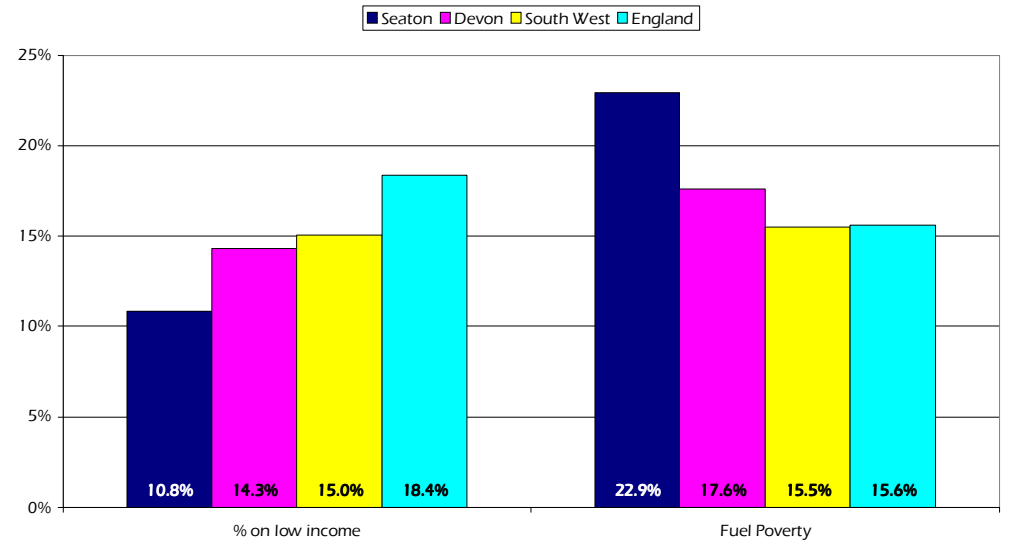


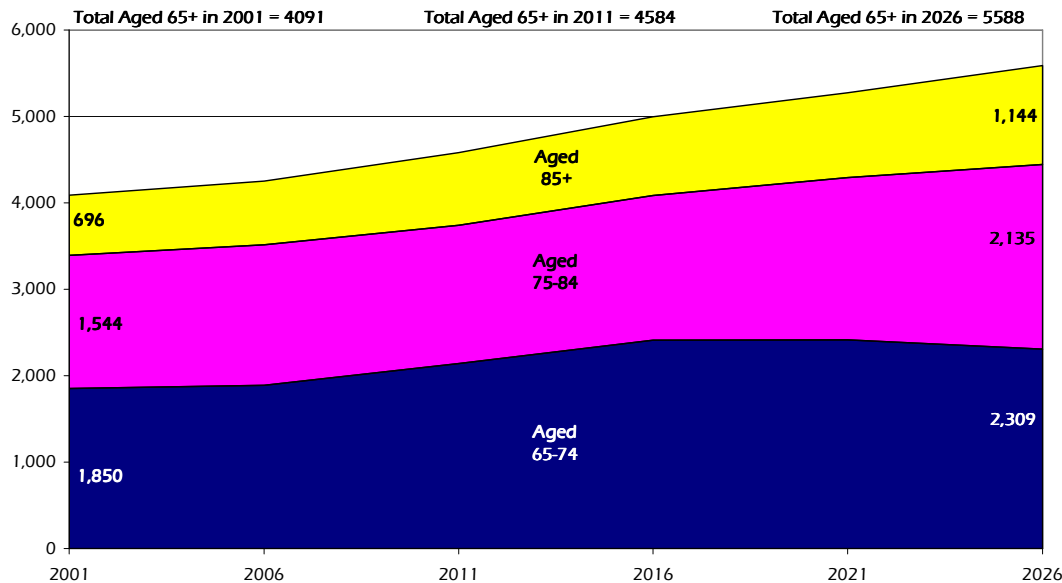
Seaton Older People Profile 2010/11



Older People on Low Income and Household Fuel Poverty by Area



Projected Population Growth, Aged 65 and over, 2001 to 2026



Estimated number of people with selected health conditions, aged 65 years and over

Health Problem	2011	2016	2021	2026
Depression	395	429	453	480
Severe Depression	130	141	149	162
Dementia	332	354	388	438
Longstanding health condition caused by heart attack	227	247	262	279
Longstanding health condition caused by stroke	108	117	125	135
Longstanding health condition caused by bronchitis/emphysema	77	84	89	95
Fall in last 12 months	1,274	1,378	1,470	1,584
Regular continence problems	777	842	897	967
Moderate or severe visual impairment	423	456	490	536
Moderate or severe hearing impairment	2,121	2,277	2,464	2,741
Learning Disability	94	103	109	115