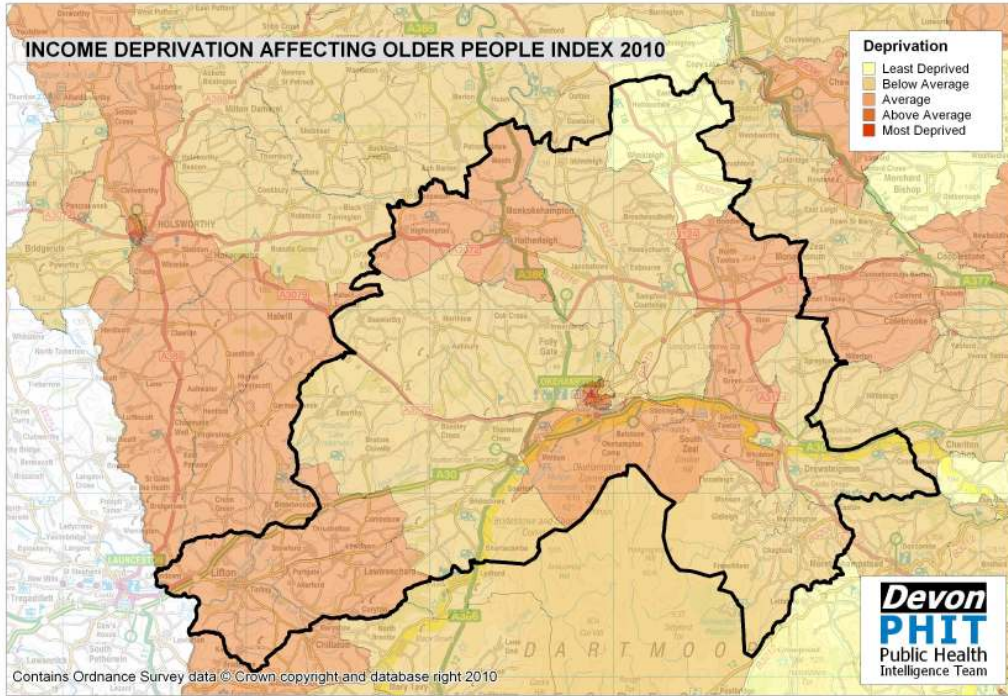
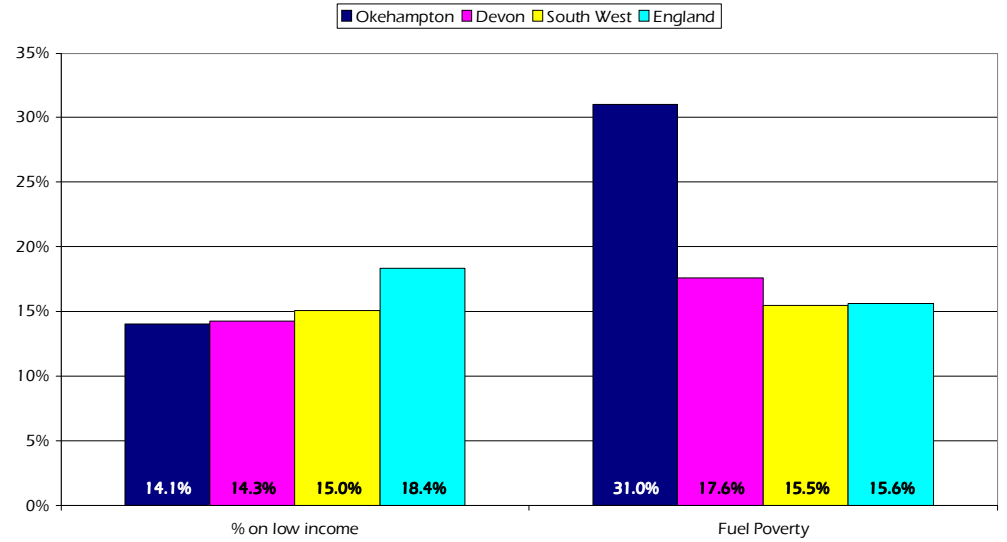


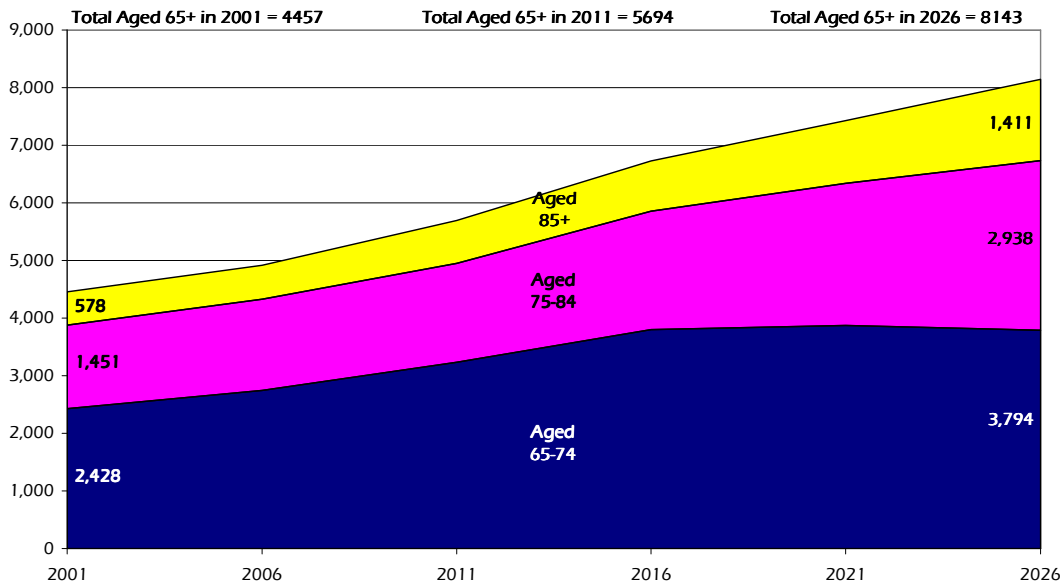
Okehampton Older People Profile 2010/11



Older People on Low Income and Household Fuel Poverty by Area



Projected Population Growth, Aged 65 and over, 2001 to 2026



Estimated number of people with selected health conditions, aged 65 years and over

Health Problem	2011	2016	2021	2026
Depression	485	571	630	689
Severe Depression	153	181	202	230
Dementia	340	404	487	586
Longstanding health condition caused by heart attack	279	328	366	407
Longstanding health condition caused by stroke	131	156	175	197
Longstanding health condition caused by bronchitis/emphysema	97	114	126	140
Fall in last 12 months	1,491	1,759	1,989	2,233
Regular continence problems	920	1,086	1,220	1,369
Moderate or severe visual impairment	486	576	657	752
Moderate or severe hearing impairment	2,321	2,744	3,194	3,753
Learning Disability	119	140	155	168