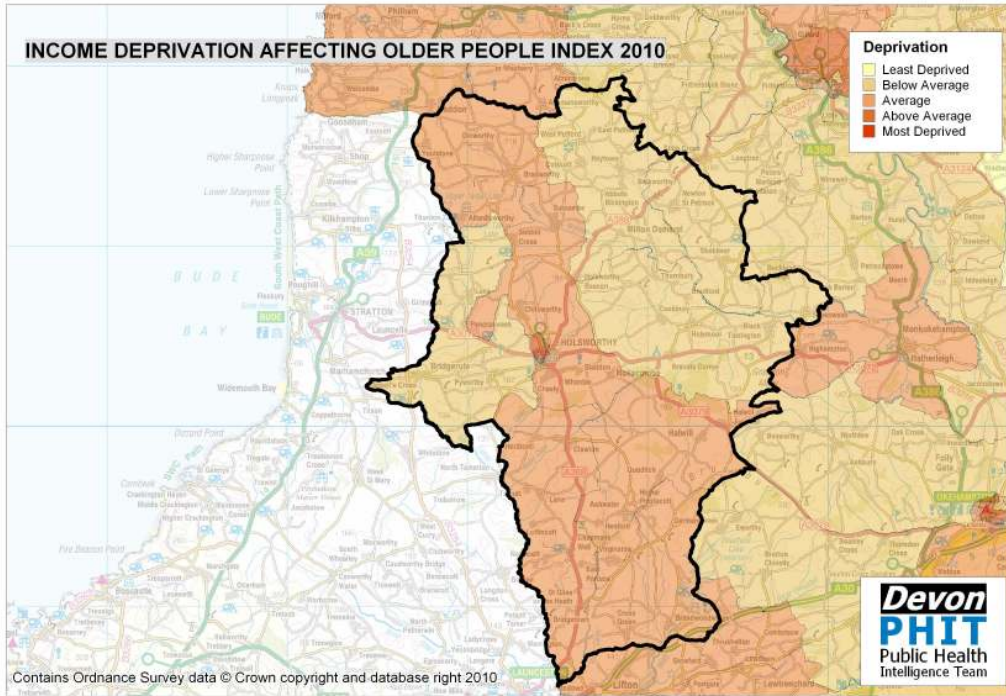
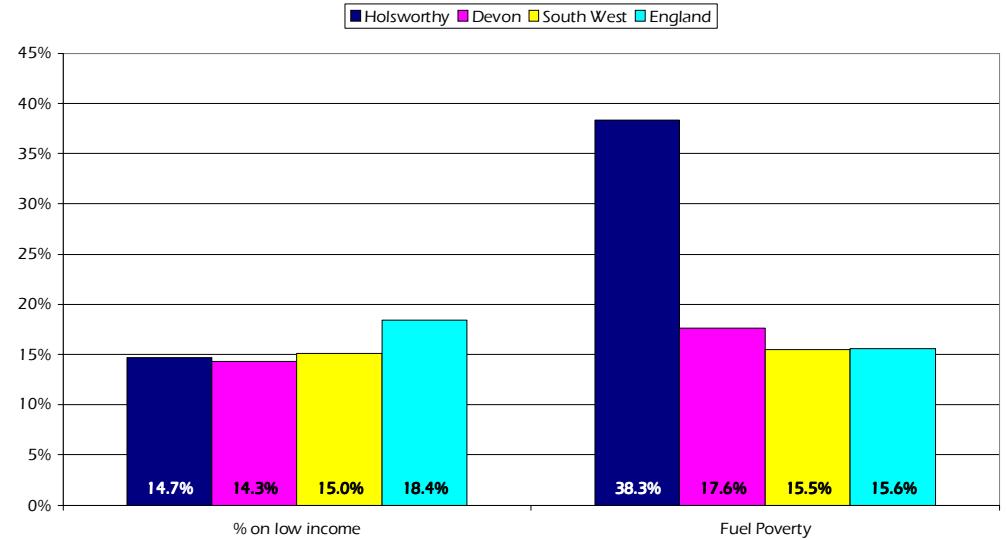


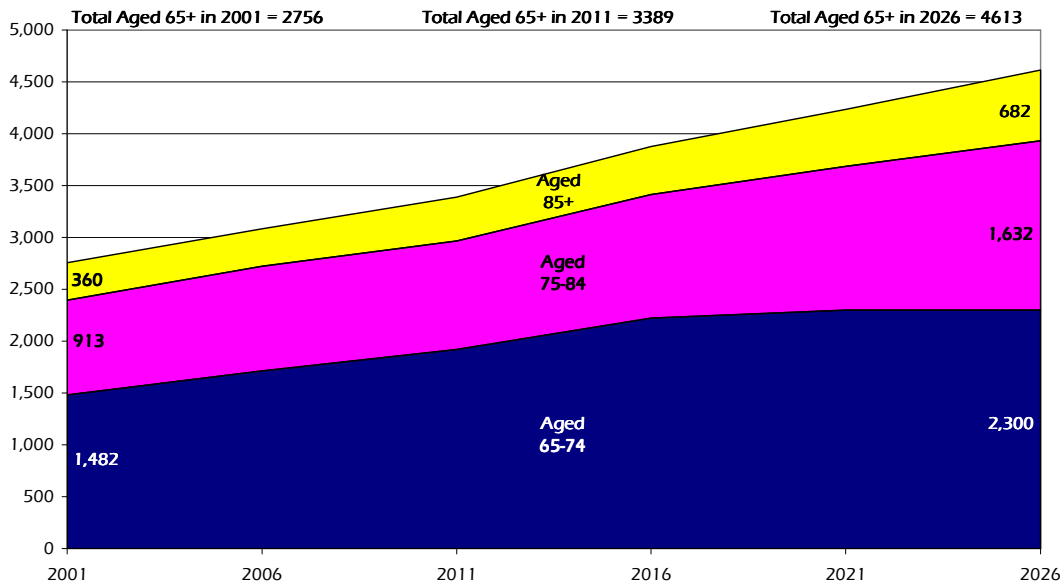
# Holsworthy Older People Profile 2010/11



Older People on Low Income and Household Fuel Poverty by Area



Projected Population Growth, Aged 65 and over, 2001 to 2026



Estimated number of people with selected health conditions, aged 65 years and over

Health Problem	2011	2016	2021	2026
Depression	287	327	357	390
Severe Depression	91	104	114	128
Dementia	201	227	264	308
Longstanding health condition caused by heart attack	169	193	212	232
Longstanding health condition caused by stroke	79	91	101	111
Longstanding health condition caused by bronchitis/emphysema	59	67	74	80
Fall in last 12 months	881	1,002	1,113	1,234
Regular continence problems	548	623	690	766
Moderate or severe visual impairment	290	330	369	416
Moderate or severe hearing impairment	1,382	1,566	1,774	2,039
Learning Disability	70	81	88	95