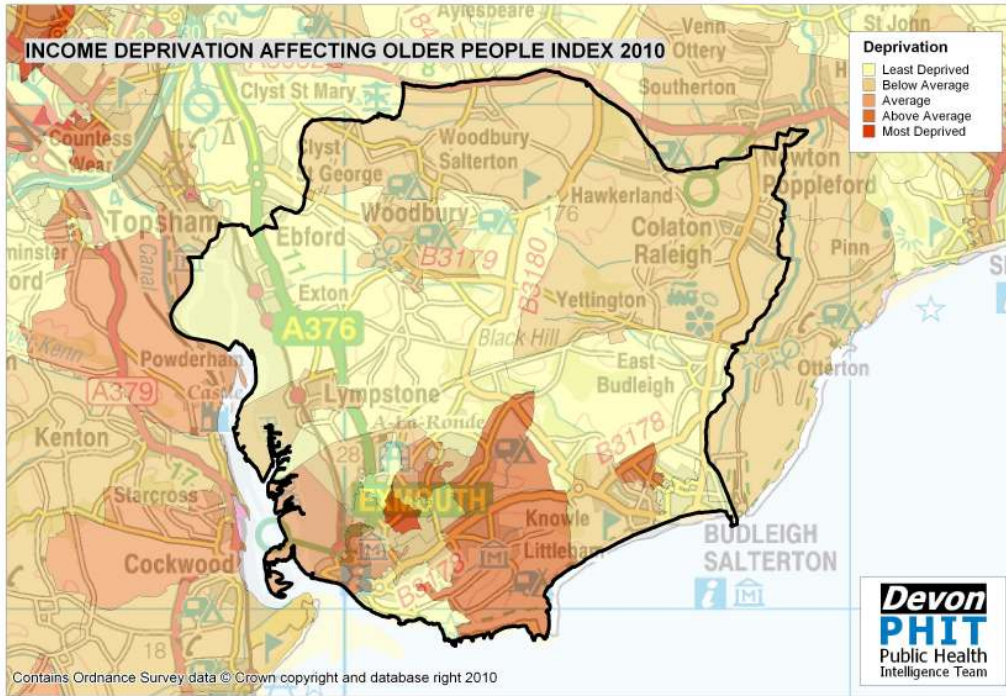
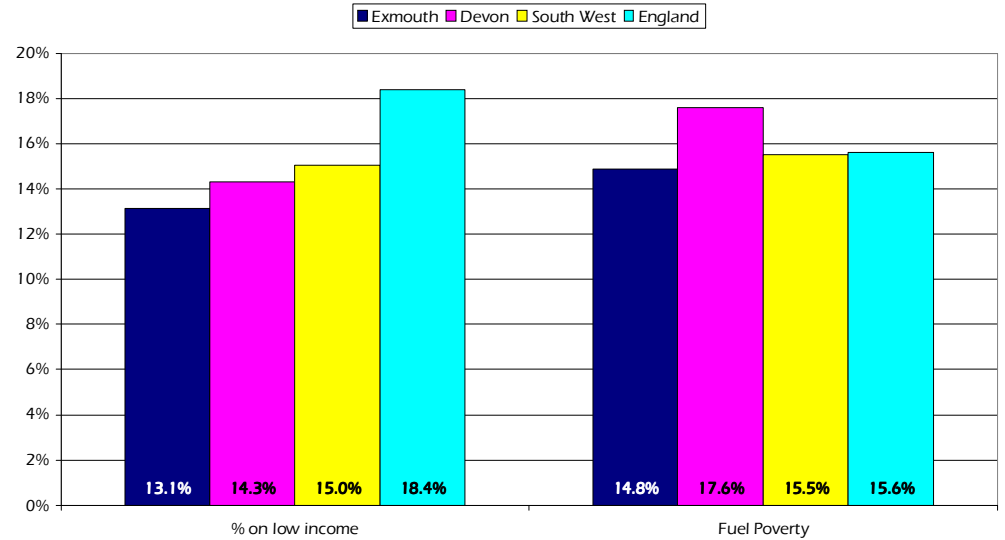


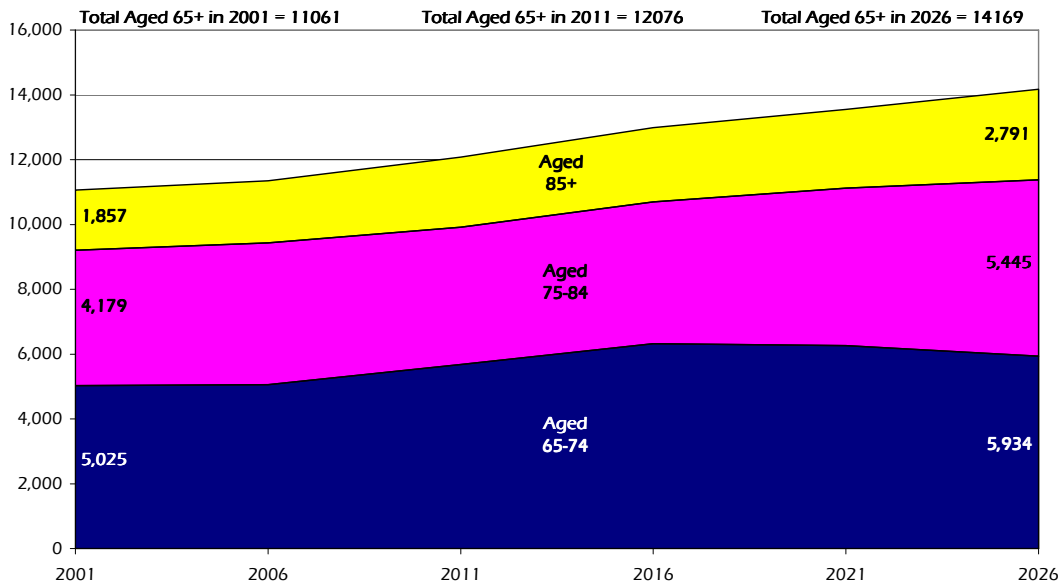
Exmouth Older People Profile 2010/11



Older People on Low Income and Household Fuel Poverty by Area



Projected Population Growth, Aged 65 and over, 2001 to 2026



Estimated number of people with selected health conditions, aged 65 years and over

Health Problem	2011	2016	2021	2026
Depression	1,063	1,139	1,188	1,243
Severe Depression	341	365	382	410
Dementia	862	905	978	1,087
Longstanding health condition caused by heart attack	589	632	663	699
Longstanding health condition caused by stroke	276	296	312	332
Longstanding health condition caused by bronchitis/emphysema	199	215	224	235
Fall in last 12 months	3,371	3,594	3,787	4,024
Regular continence problems	2,056	2,197	2,311	2,459
Moderate or severe visual impairment	1,111	1,181	1,254	1,353
Moderate or severe hearing impairment	5,547	5,868	6,273	6,882
Learning Disability	248	268	280	291