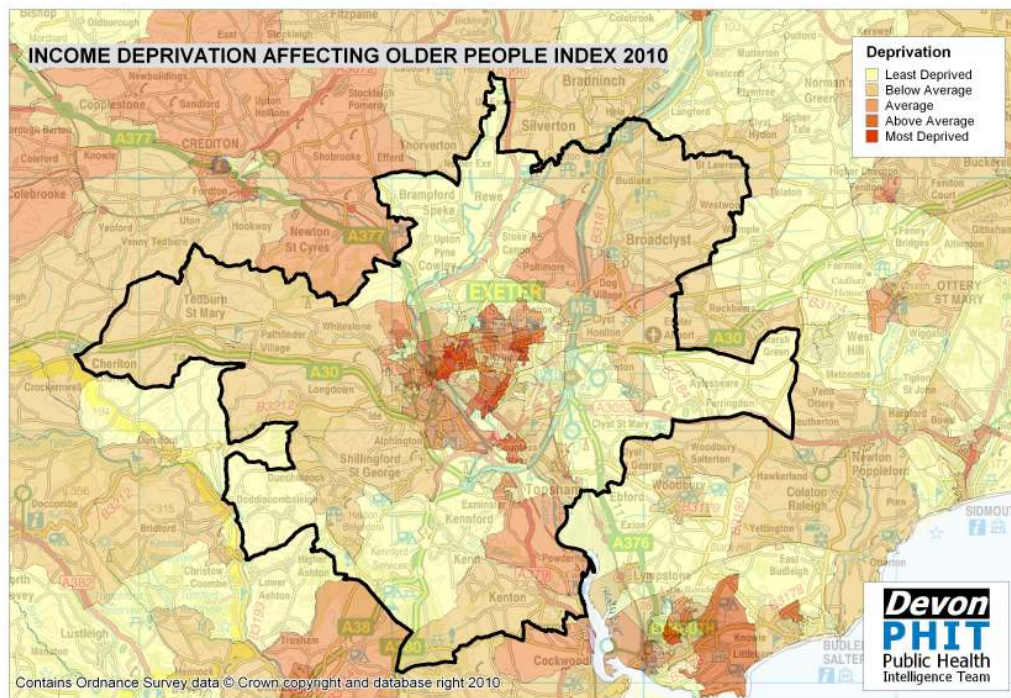
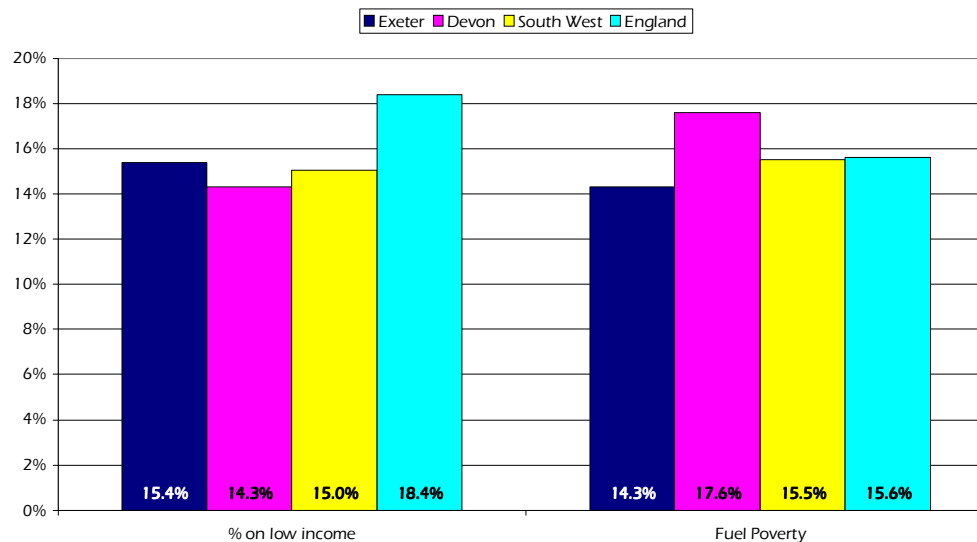


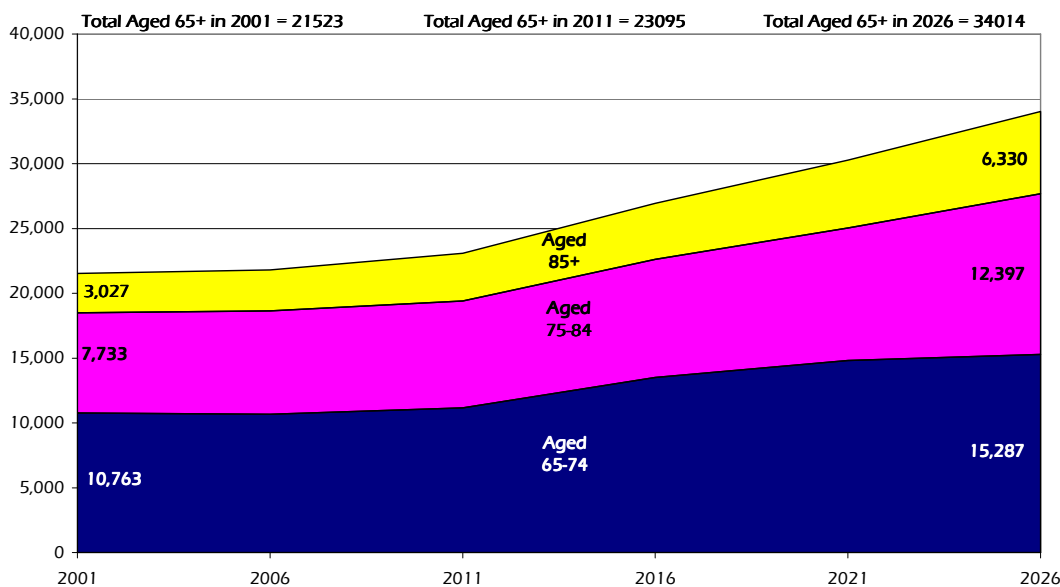
Exeter (Devon Town Area) Older People Profile 2010/11



Older People on Low Income and Household Fuel Poverty by Area



Projected Population Growth, Aged 65 and over, 2001 to 2026



Estimated number of people with selected health conditions, aged 65 years and over

Health Problem	2011	2016	2021	2026
Depression	2,014	2,334	2,620	2,938
Severe Depression	647	753	843	974
Dementia	1,568	1,810	2,117	2,495
Longstanding health condition caused by heart attack	1,133	1,322	1,488	1,685
Longstanding health condition caused by stroke	532	624	707	809
Longstanding health condition caused by bronchitis/emphysema	385	452	509	573
Fall in last 12 months	6,313	7,318	8,322	9,449
Regular continence problems	3,883	4,505	5,105	5,814
Moderate or severe visual impairment	2,103	2,422	2,744	3,178
Moderate or severe hearing impairment	10,383	11,914	13,613	15,993
Learning Disability	477	555	627	700