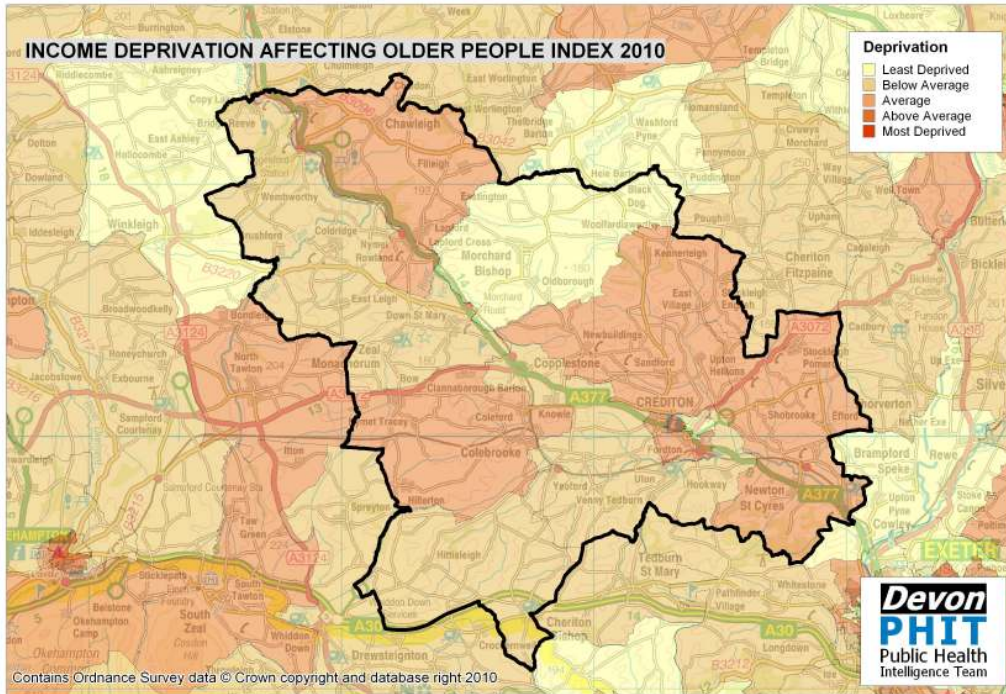
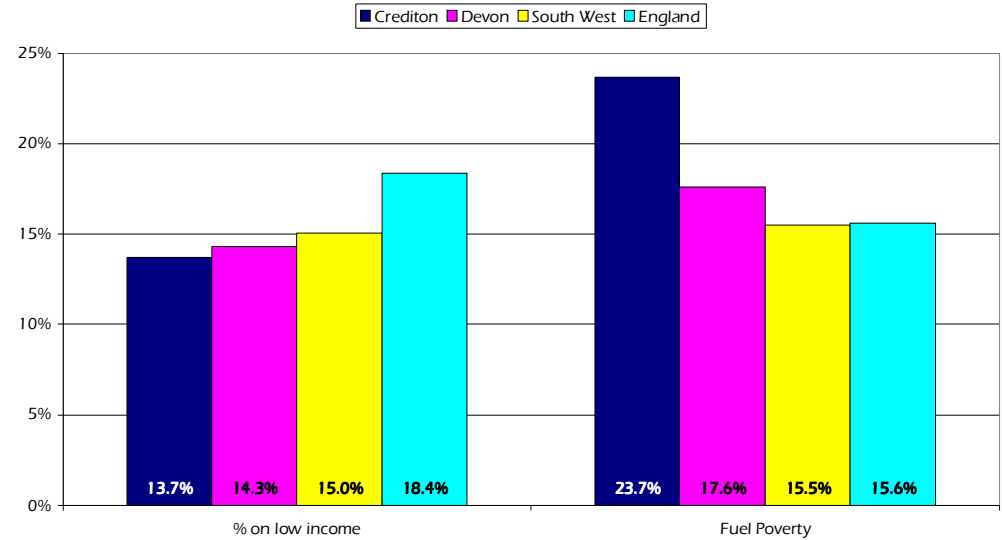


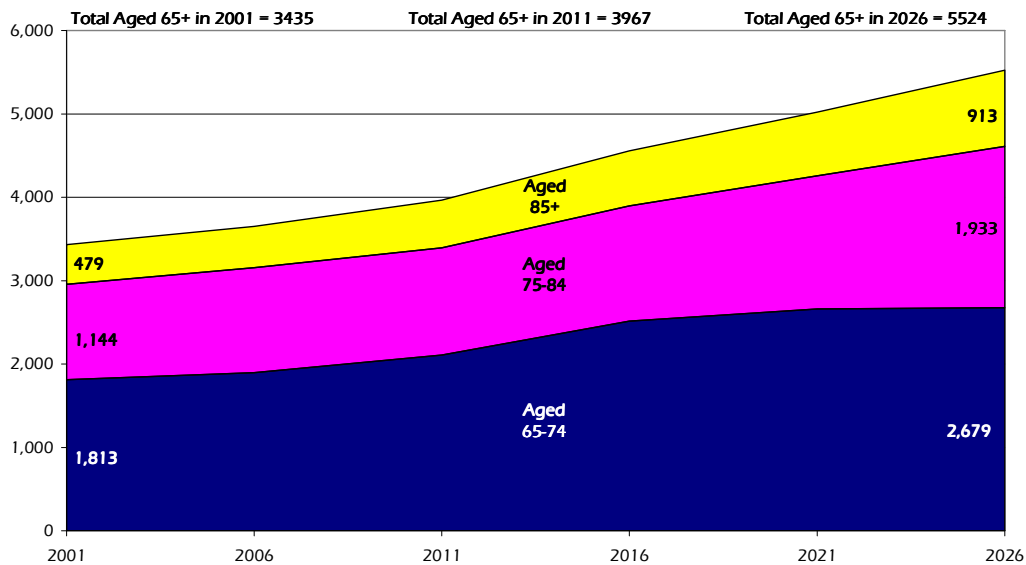
Crediton Older People Profile 2010/11



Older People on Low Income and Household Fuel Poverty by Area



Projected Population Growth, Aged 65 and over, 2001 to 2026



Estimated number of people with selected health conditions, aged 65 years and over

| Health Problem | 2011 | 2016 | 2021 | 2026 |
|--|-------|-------|-------|-------|
| Depression | 340 | 389 | 429 | 471 |
| Severe Depression | 109 | 125 | 138 | 156 |
| Dementia | 253 | 285 | 328 | 383 |
| Longstanding health condition caused by heart attack | 194 | 223 | 245 | 272 |
| Longstanding health condition caused by stroke | 92 | 105 | 117 | 131 |
| Longstanding health condition caused by bronchitis/emphysema | 67 | 77 | 85 | 93 |
| Fall in last 12 months | 1,060 | 1,209 | 1,349 | 1,504 |
| Regular continence problems | 650 | 741 | 823 | 920 |
| Moderate or severe visual impairment | 349 | 394 | 442 | 503 |
| Moderate or severe hearing impairment | 1,690 | 1,903 | 2,147 | 2,486 |
| Learning Disability | 82 | 94 | 104 | 114 |