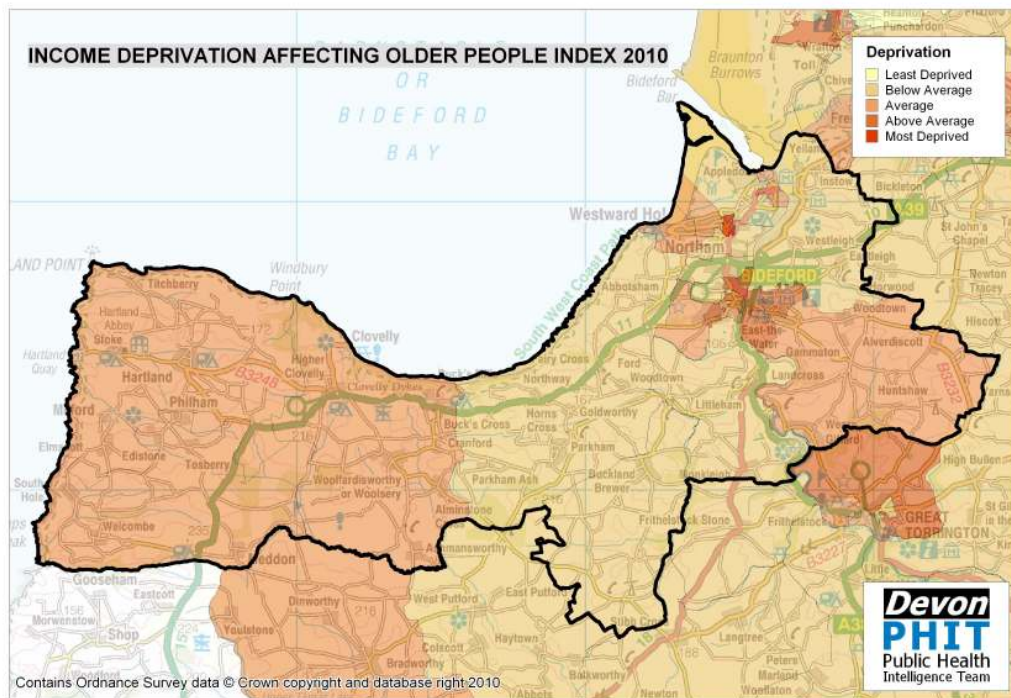
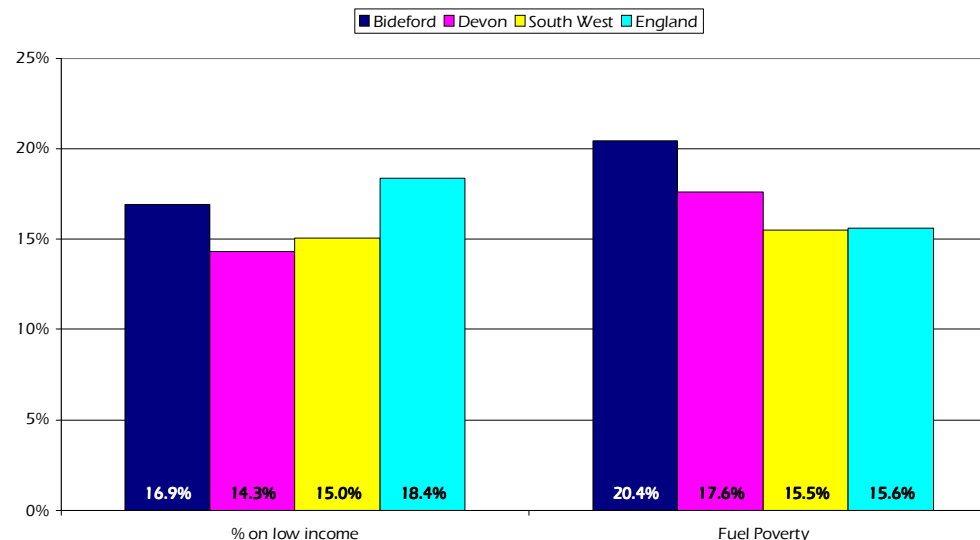


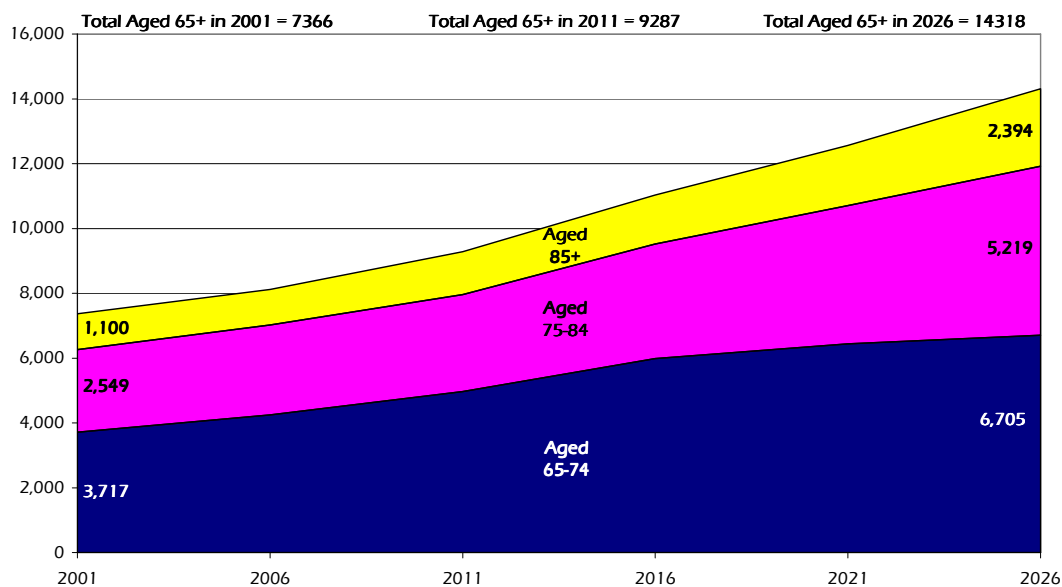
Bideford / Northam Older People Profile 2010/11



Older People on Low Income and Household Fuel Poverty by Area



Projected Population Growth, Aged 65 and over, 2001 to 2026



Estimated number of people with selected health conditions, aged 65 years and over

Health Problem	2011	2016	2021	2026
Depression	796	942	1,071	1,222
Severe Depression	254	301	344	405
Dementia	585	687	830	1,011
Longstanding health condition caused by heart attack	456	542	620	712
Longstanding health condition caused by stroke	215	256	296	343
Longstanding health condition caused by bronchitis/emphysema	157	187	214	244
Fall in last 12 months	2,472	2,921	3,380	3,916
Regular continence problems	1,521	1,796	2,069	2,403
Moderate or severe visual impairment	814	962	1,120	1,320
Moderate or severe hearing impairment	3,940	4,634	5,466	6,562
Learning Disability	193	229	261	296