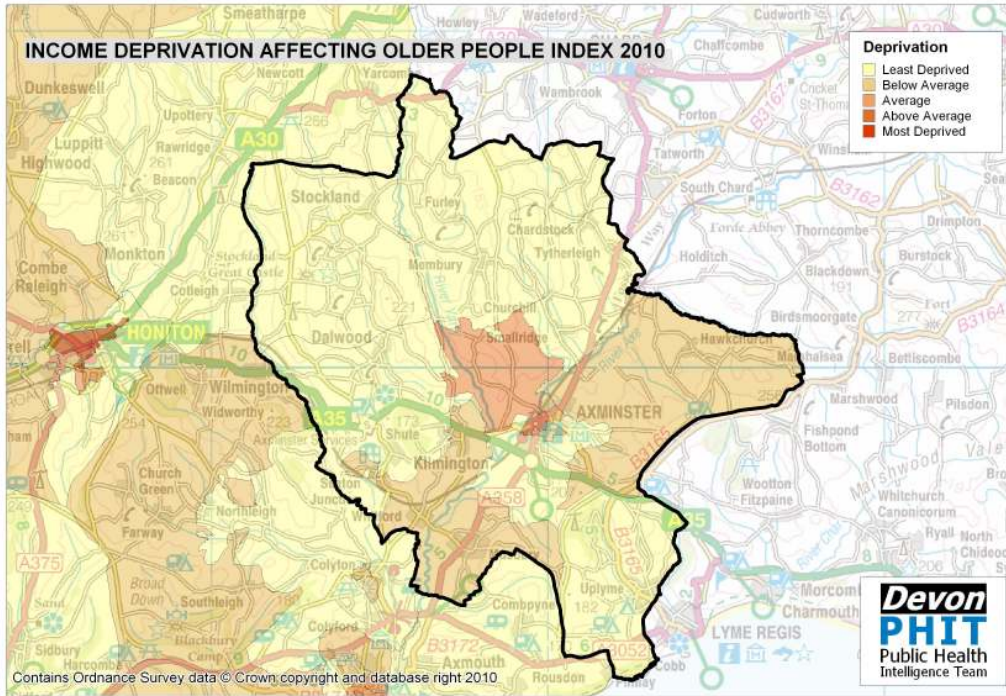
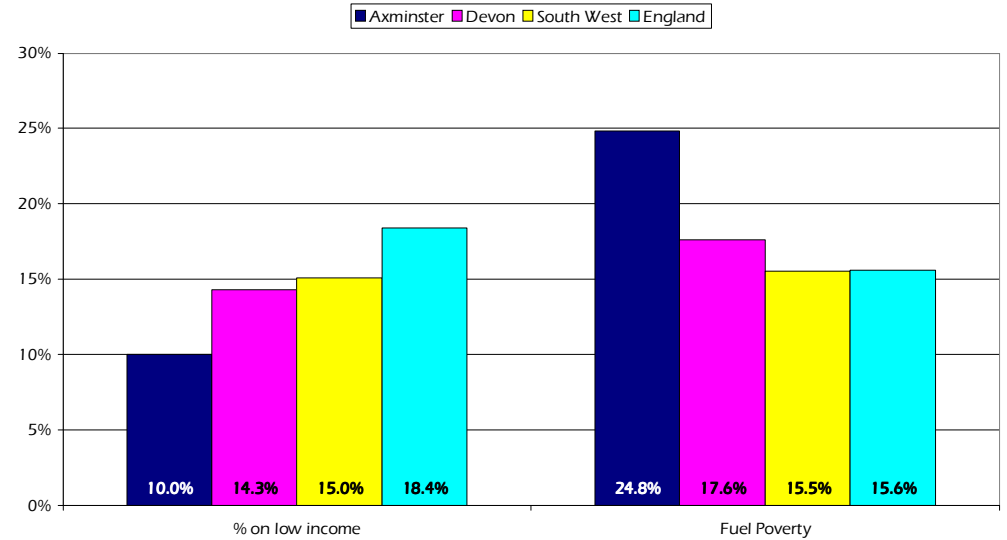


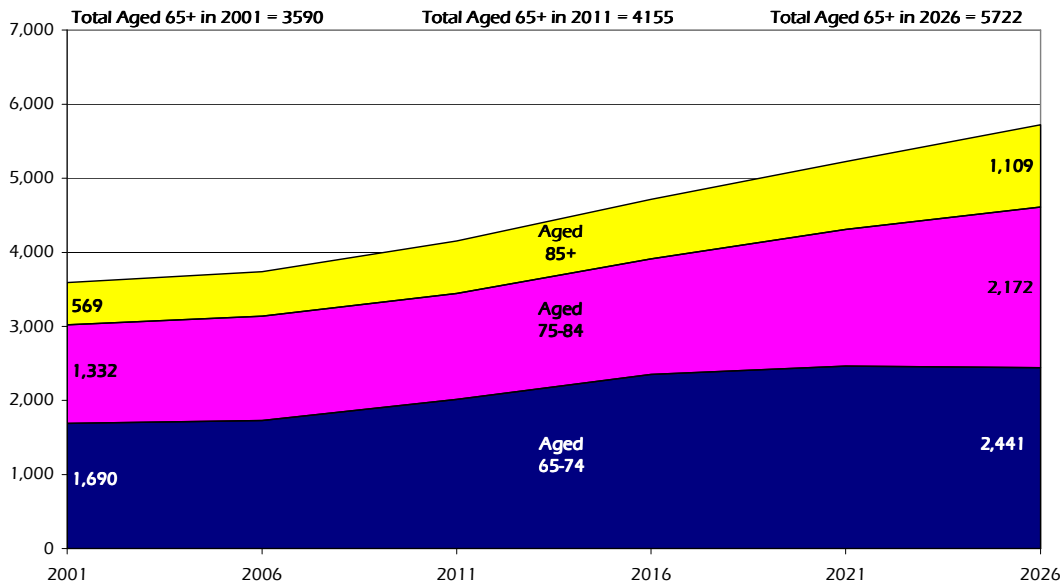
# Axminster Older People Profile 2010/11



Older People on Low Income and Household Fuel Poverty by Area



Projected Population Growth, Aged 65 and over, 2001 to 2026



Estimated number of people with selected health conditions, aged 65 years and over

Health Problem	2011	2016	2021	2026
Depression	355	401	446	488
Severe Depression	117	132	146	165
Dementia	292	325	375	439
Longstanding health condition caused by heart attack	207	234	260	287
Longstanding health condition caused by stroke	98	111	125	139
Longstanding health condition caused by bronchitis/emphysema	71	80	89	98
Fall in last 12 months	1,142	1,285	1,442	1,607
Regular continence problems	696	786	880	981
Moderate or severe visual impairment	378	425	480	544
Moderate or severe hearing impairment	1,882	2,105	2,397	2,762
Learning Disability	86	97	108	118