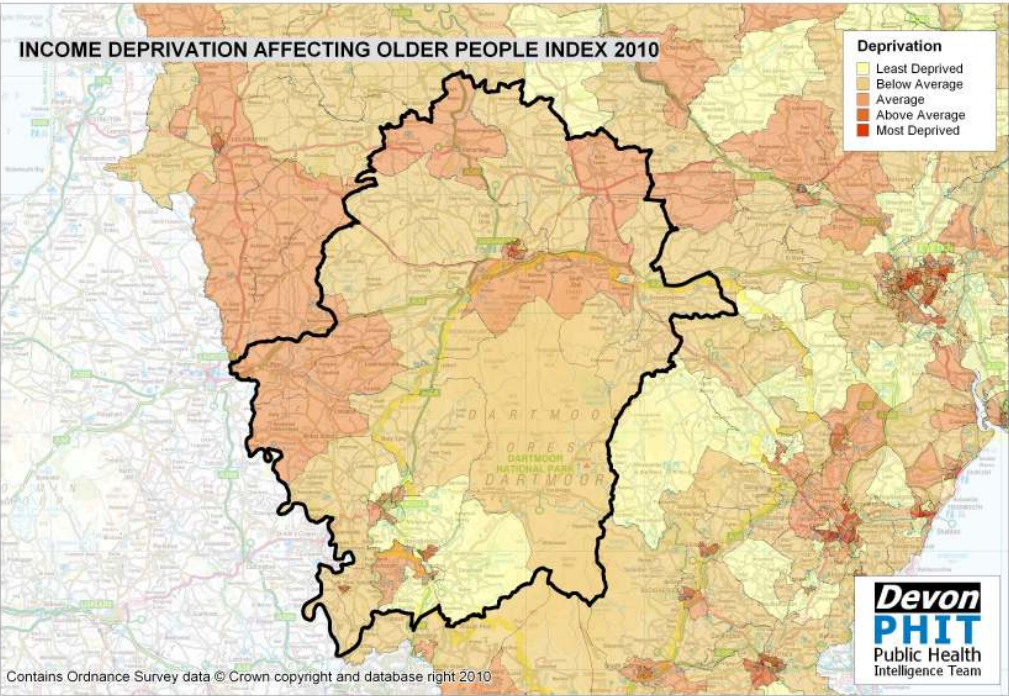
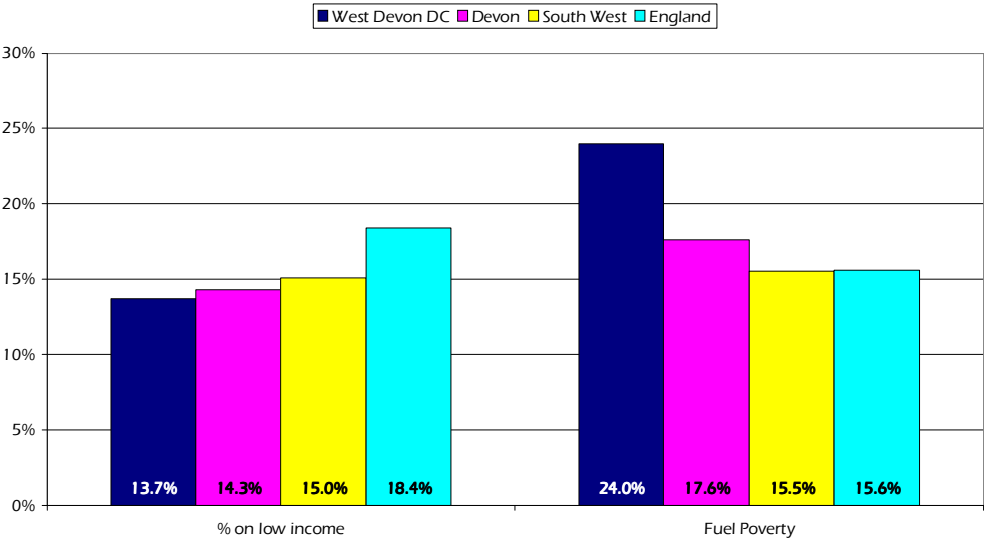


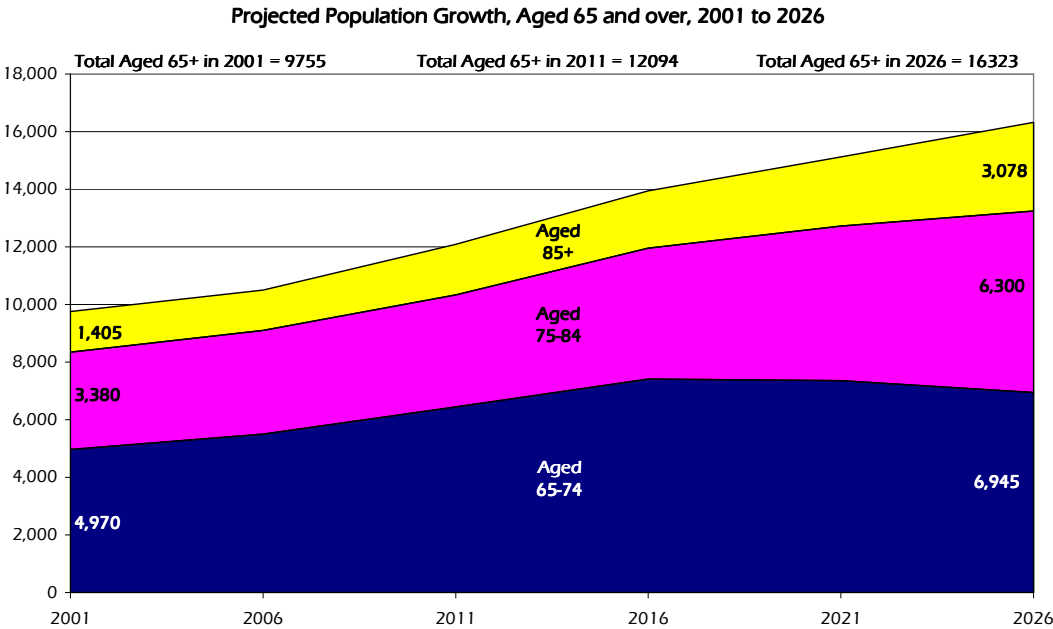
West Devon District Council Older People Profile 2010/11



Older People on Low Income and Household Fuel Poverty by Area



Estimated number of people with selected health conditions, aged 65 years and over



Health Problem	2011	2016	2021	2026
Depression	1,037	1,216	1,340	1,471
Severe Depression	330	389	434	495
Dementia	764	902	1,085	1,302
Longstanding health condition caused by heart attack	593	695	774	862
Longstanding health condition caused by stroke	279	331	372	418
Longstanding health condition caused by bronchitis/emphysema	204	240	266	294
Fall in last 12 months	3,219	3,774	4,266	4,801
Regular continence problems	1,987	2,333	2,620	2,946
Moderate or severe visual impairment	1,059	1,247	1,424	1,630
Moderate or severe hearing impairment	5,136	6,036	7,020	8,246
Learning Disability	251	294	325	354