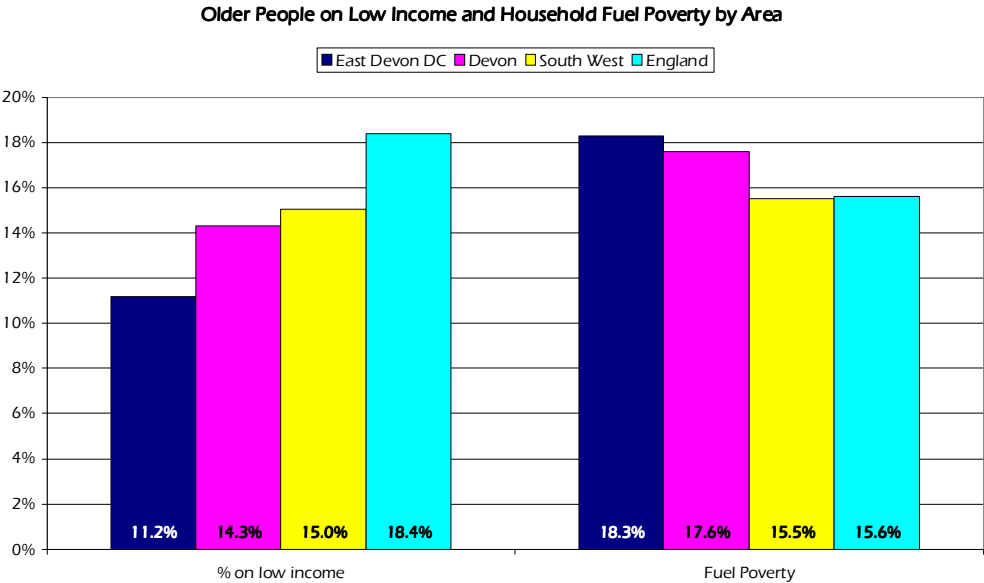
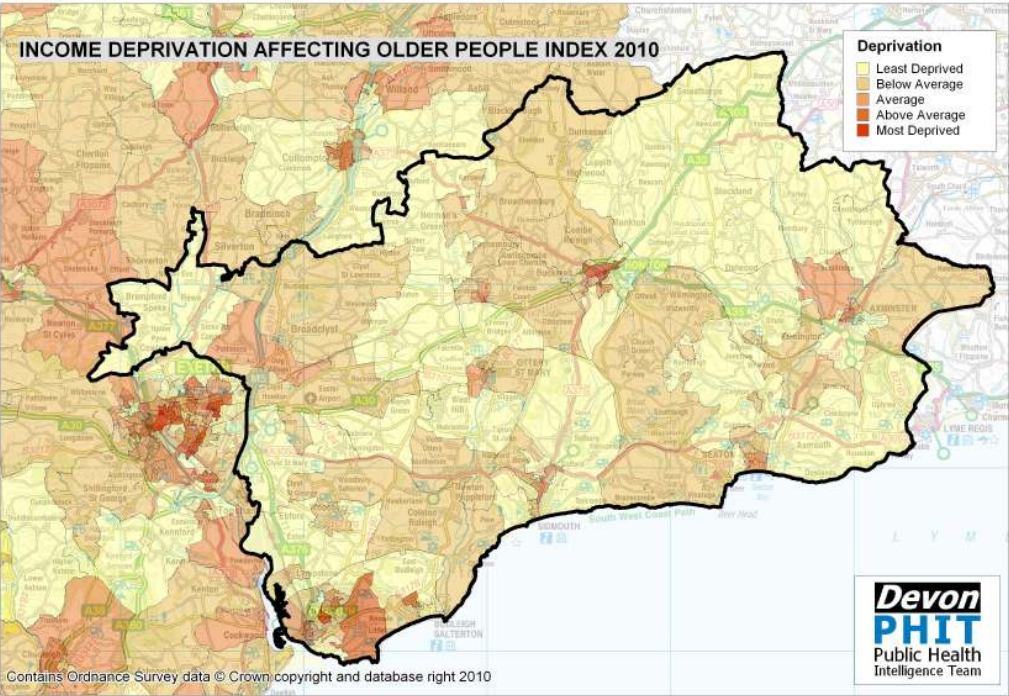
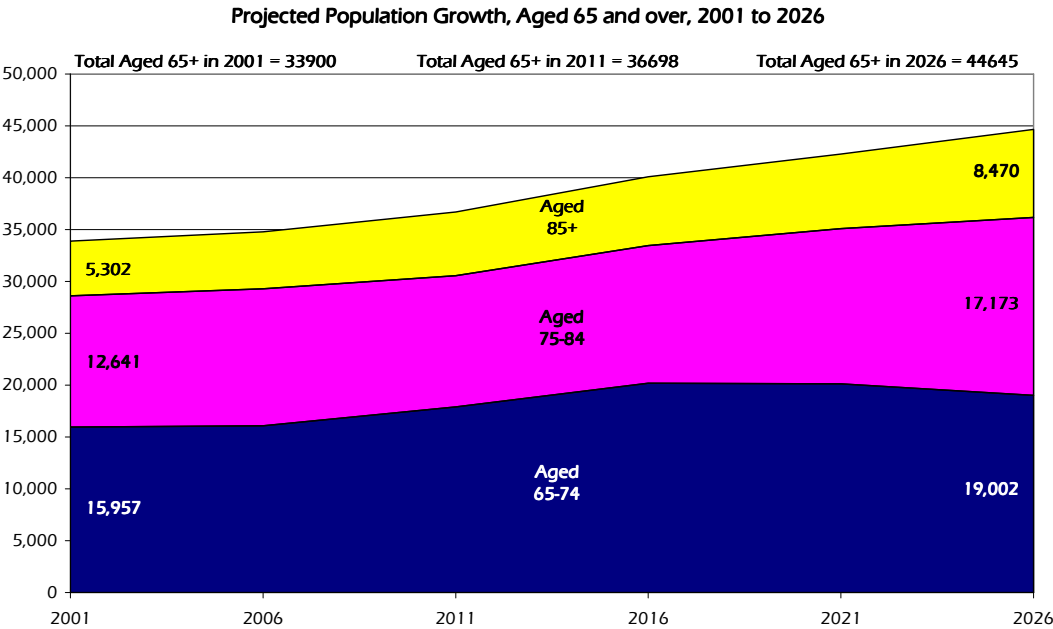


East Devon District Council Older People Profile 2010/11



Estimated number of people with selected health conditions, aged 65 years and over



Health Problem	2011	2016	2021	2026
Depression	3,277	3,675	3,999	4,354
Severe Depression	1,056	1,183	1,289	1,441
Dementia	2,612	2,864	3,229	3,735
Longstanding health condition caused by heart attack	1,850	2,080	2,272	2,495
Longstanding health condition caused by stroke	872	981	1,079	1,195
Longstanding health condition caused by bronchitis/emphysema	630	711	775	846
Fall in last 12 months	10,370	11,566	12,707	14,047
Regular continence problems	6,342	7,093	7,785	8,621
Moderate or severe visual impairment	3,427	3,809	4,219	4,740
Moderate or severe hearing impairment	16,967	18,769	20,923	23,903
Learning Disability	778	877	957	1,035