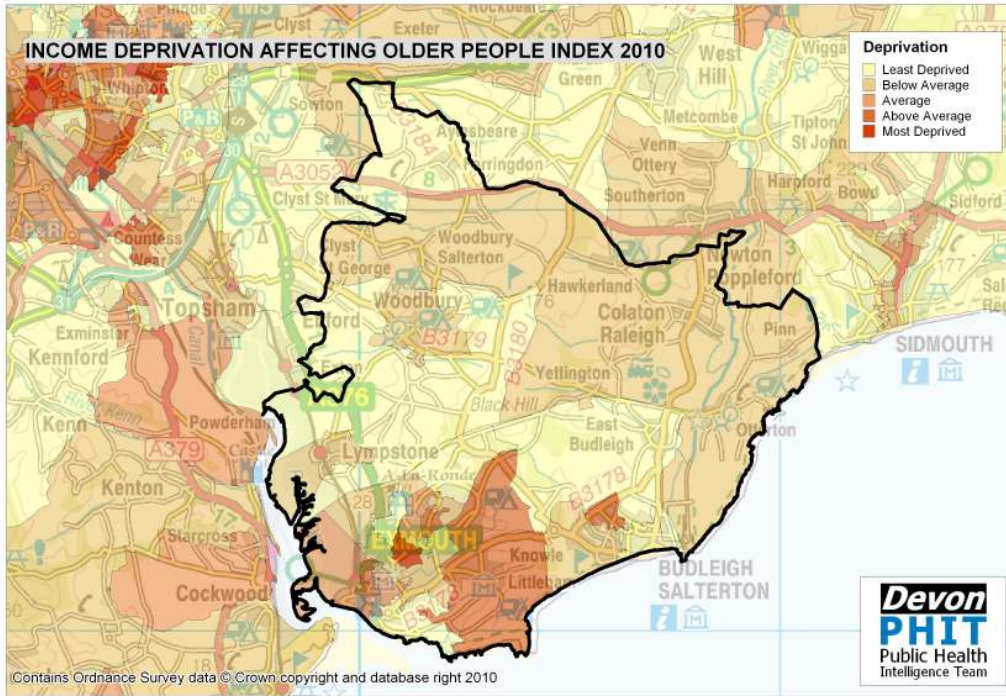
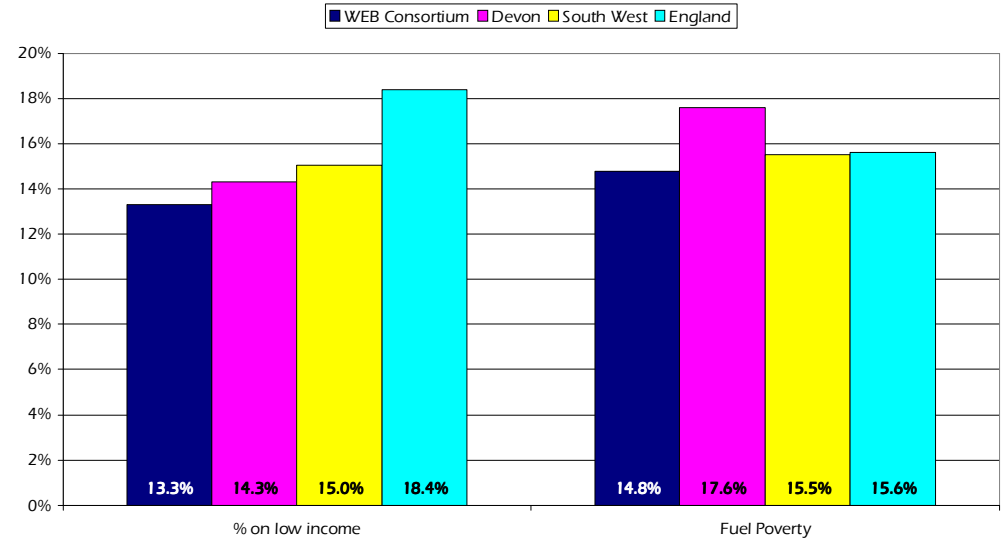


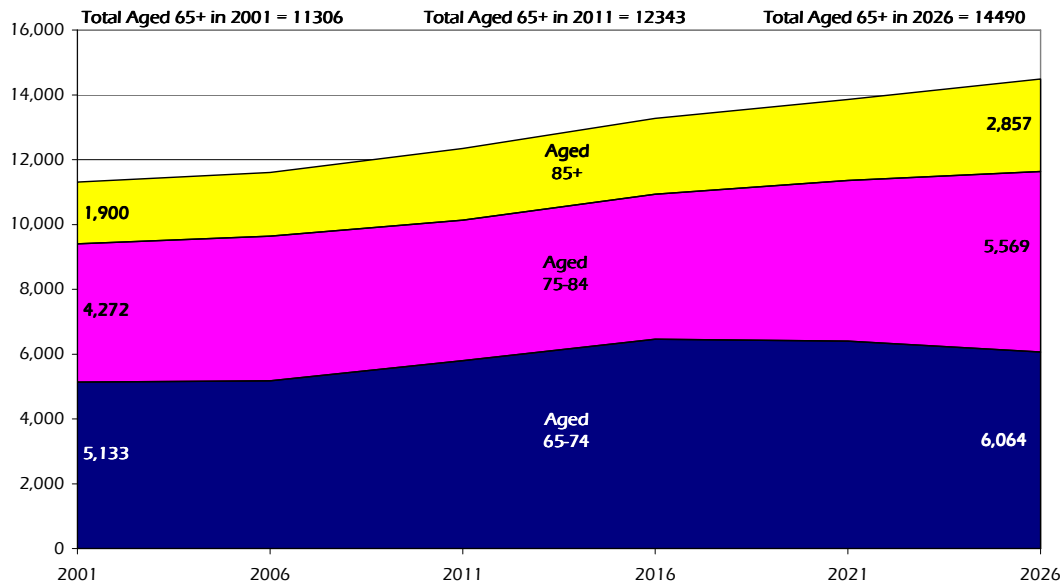
WEB Consortium Older People Profile 2010/11



Older People on Low Income and Household Fuel Poverty by Area



Projected Population Growth, Aged 65 and over, 2001 to 2026



Estimated number of people with selected health conditions, aged 65 years and over

Health Problem	2011	2016	2021	2026
Depression	1,087	1,164	1,215	1,271
Severe Depression	349	373	390	419
Dementia	882	926	1,001	1,112
Longstanding health condition caused by heart attack	602	646	677	715
Longstanding health condition caused by stroke	282	303	319	340
Longstanding health condition caused by bronchitis/emphysema	203	219	229	240
Fall in last 12 months	3,446	3,675	3,872	4,116
Regular continence problems	2,102	2,246	2,363	2,515
Moderate or severe visual impairment	1,136	1,207	1,283	1,384
Moderate or severe hearing impairment	5,672	6,000	6,416	7,040
Learning Disability	254	274	286	297