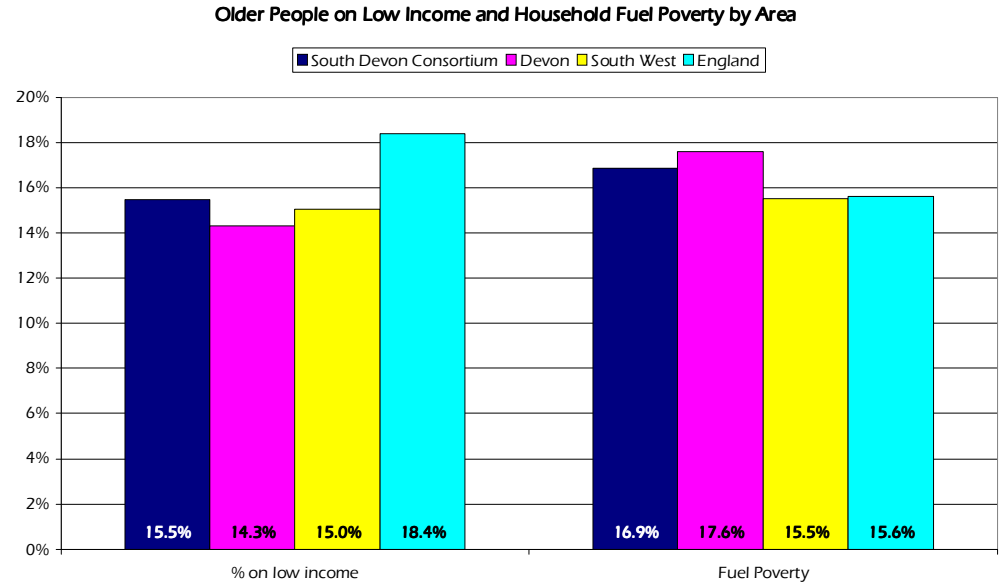
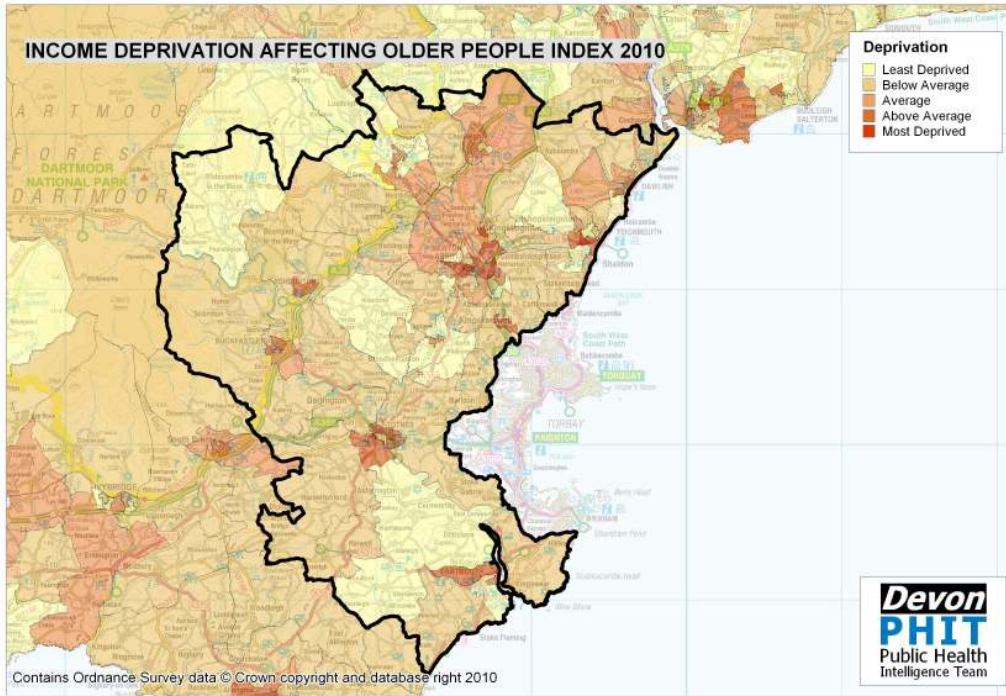
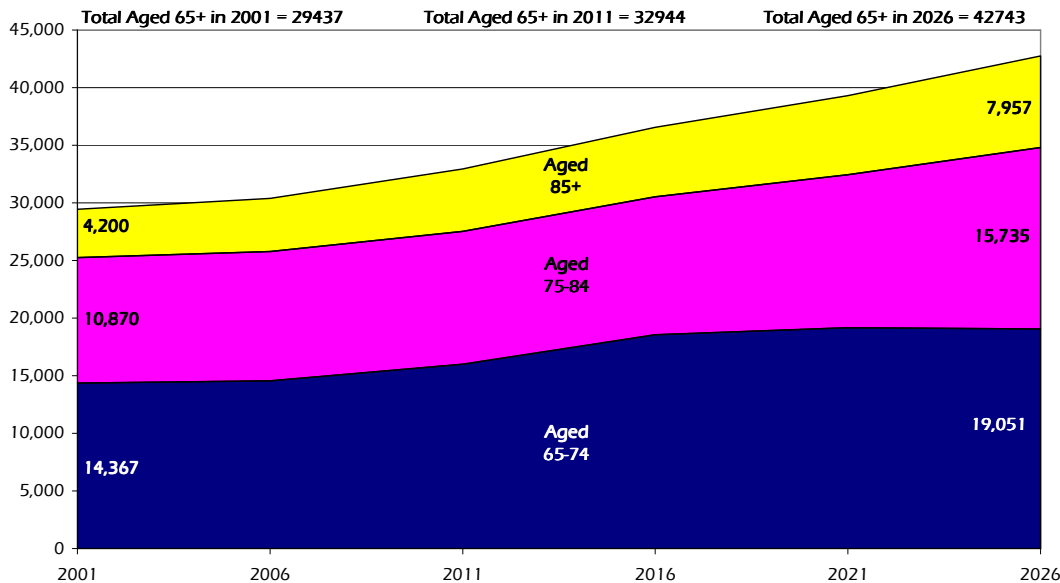


South Devon Commissioning Consortium Older People Profile 2010/11



Projected Population Growth, Aged 65 and over, 2001 to 2026



Estimated number of people with selected health conditions, aged 65 years and over

Health Problem	2011	2016	2021	2026
Depression	2,862	3,159	3,392	3,689
Severe Depression	923	1,016	1,095	1,222
Dementia	2,273	2,483	2,770	3,170
Longstanding health condition caused by heart attack	1,620	1,794	1,936	2,122
Longstanding health condition caused by stroke	764	847	920	1,017
Longstanding health condition caused by bronchitis/emphysema	552	614	662	721
Fall in last 12 months	9,038	9,976	10,837	11,926
Regular continence problems	5,540	6,105	6,626	7,308
Moderate or severe visual impairment	2,996	3,270	3,571	4,005
Moderate or severe hearing impairment	14,823	16,107	17,747	20,178
Learning Disability	679	754	814	880