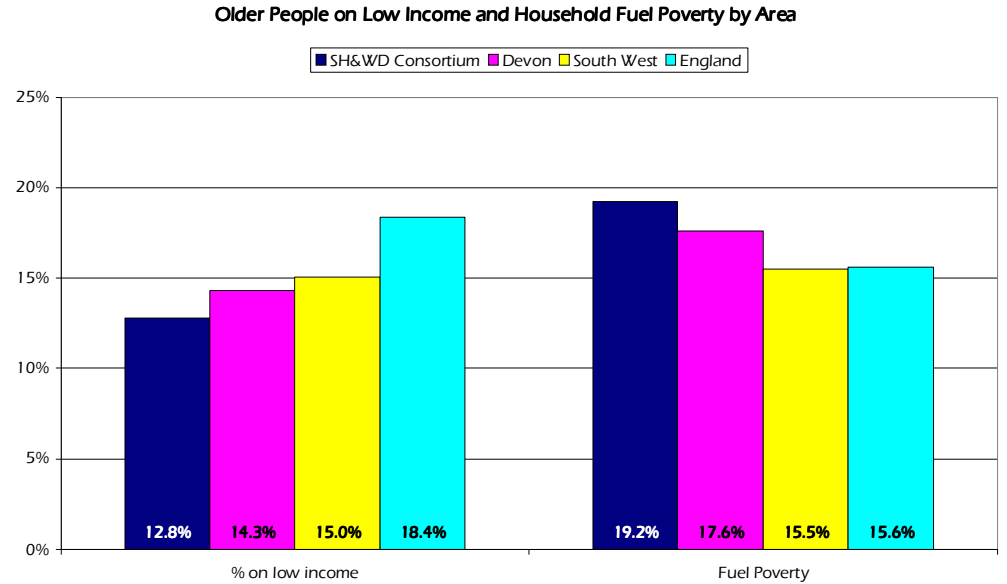
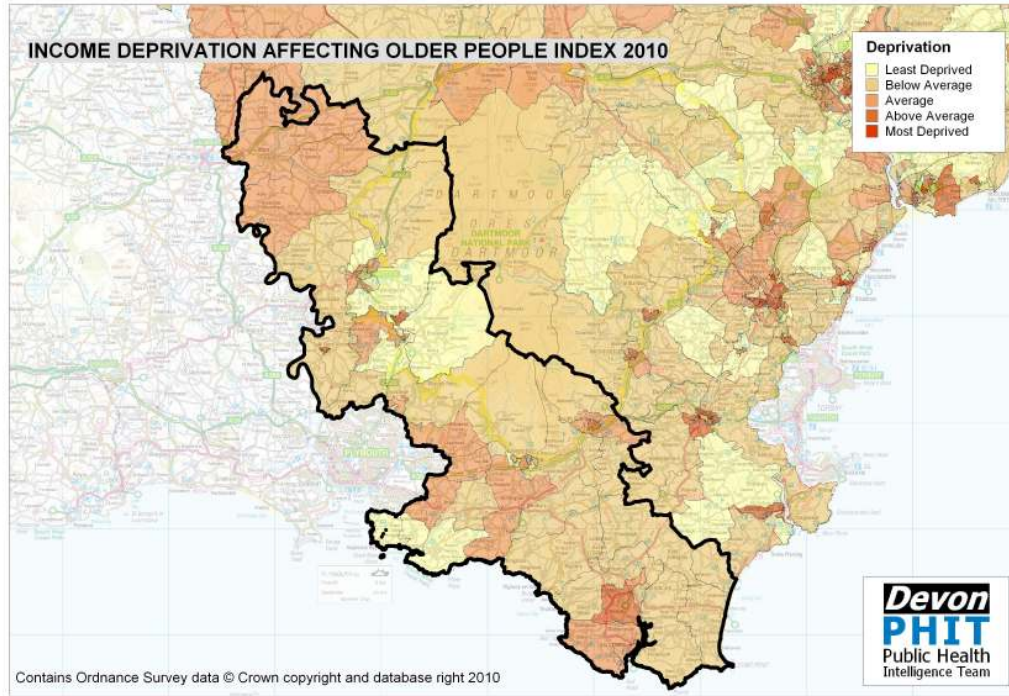
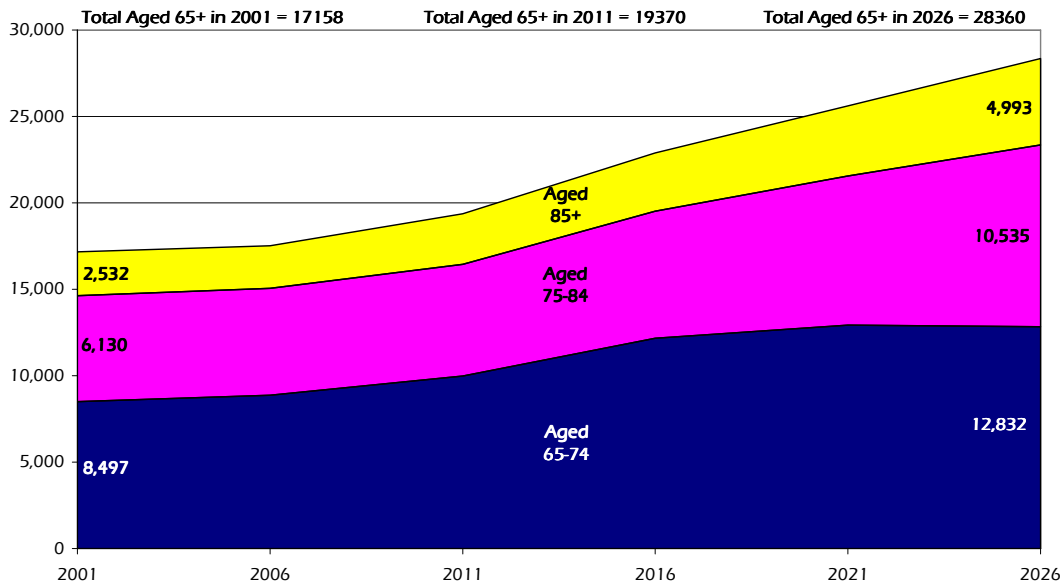


South Hams and West Devon Commissioning Group Older People Profile 2010/11



Projected Population Growth, Aged 65 and over, 2001 to 2026



Estimated number of people with selected health conditions, aged 65 years and over

Health Problem	2011	2016	2021	2026
Depression	1,662	1,953	2,179	2,410
Severe Depression	535	630	706	808
Dementia	1,267	1,474	1,746	2,070
Longstanding health condition caused by heart attack	954	1,126	1,269	1,420
Longstanding health condition caused by stroke	452	536	610	689
Longstanding health condition caused by bronchitis/emphysema	328	389	438	486
Fall in last 12 months	5,205	6,106	6,939	7,805
Regular continence problems	3,203	3,757	4,252	4,796
Moderate or severe visual impairment	1,722	2,011	2,298	2,644
Moderate or severe hearing impairment	8,411	9,768	11,297	13,252
Learning Disability	401	474	532	584