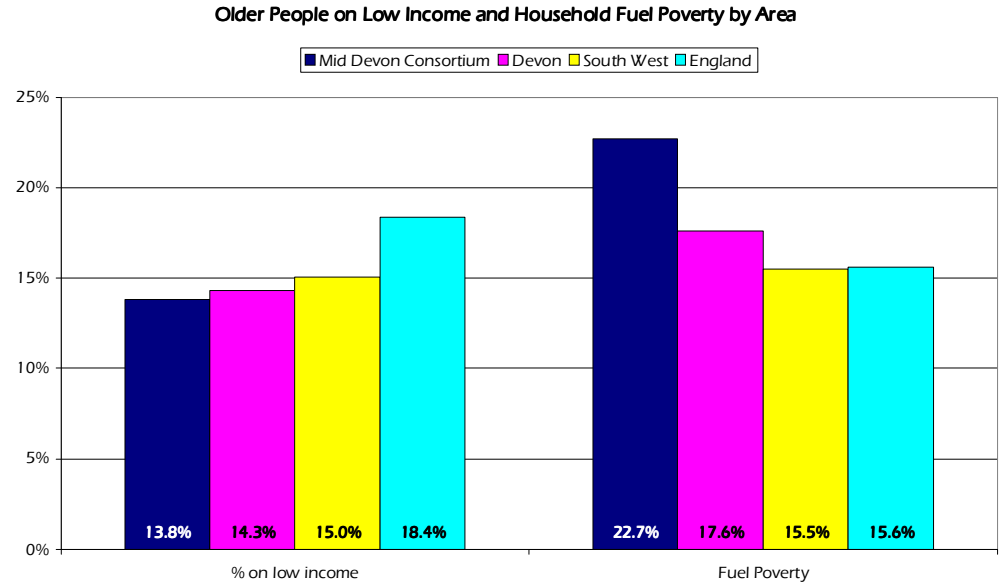
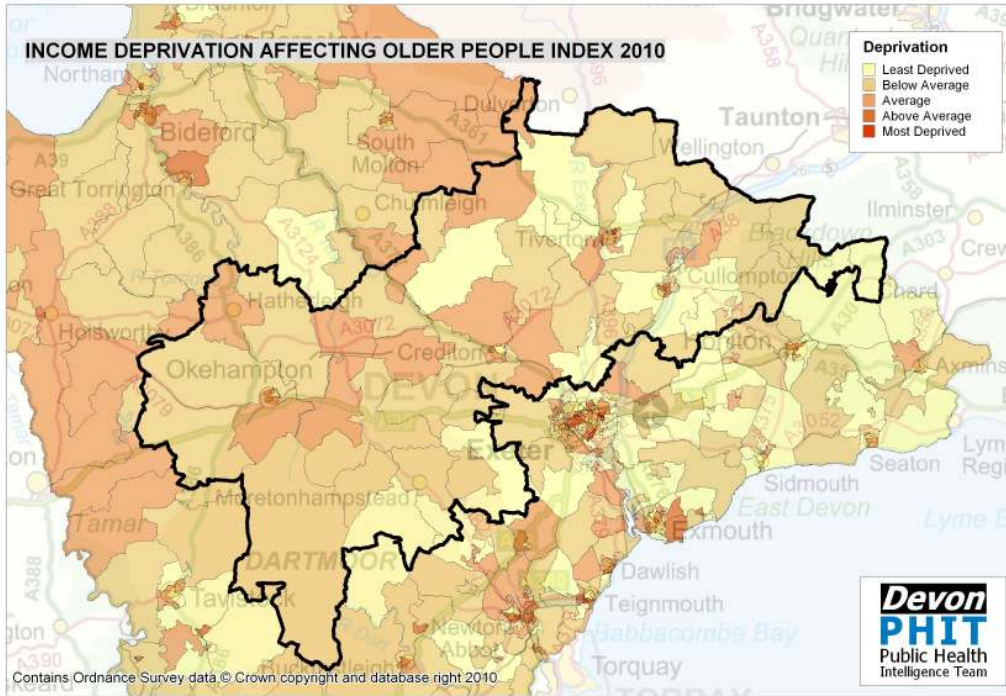
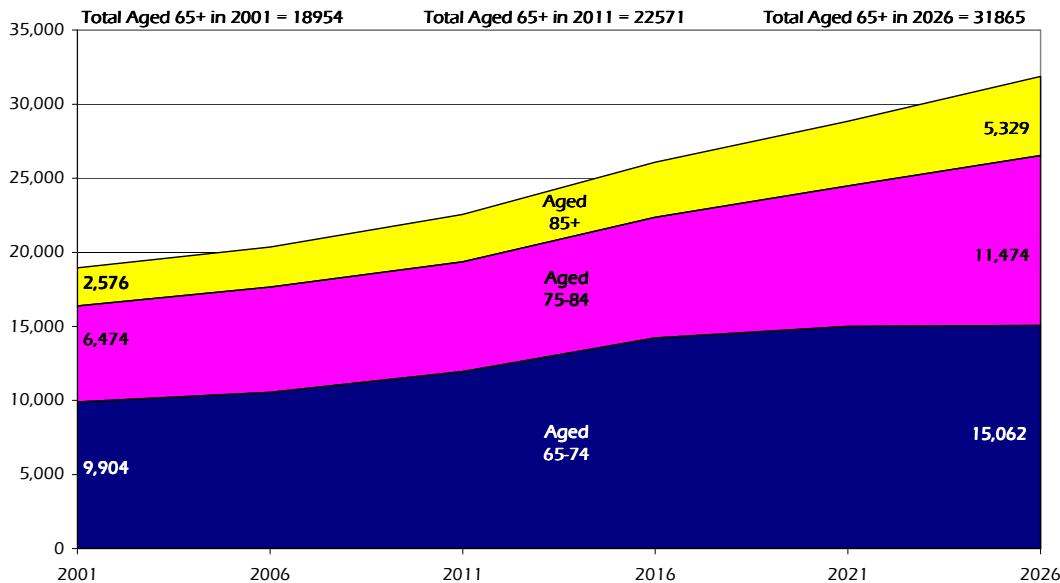


Mid Devon Consortium Older People Profile 2010/11



Projected Population Growth, Aged 65 and over, 2001 to 2026



Estimated number of people with selected health conditions, aged 65 years and over

Health Problem	2011	2016	2021	2026
Depression	1,939	2,230	2,464	2,722
Severe Depression	619	712	789	899
Dementia	1,436	1,638	1,905	2,248
Longstanding health condition caused by heart attack	1,107	1,275	1,414	1,577
Longstanding health condition caused by stroke	522	605	677	761
Longstanding health condition caused by bronchitis/emphysema	381	441	488	541
Fall in last 12 months	6,023	6,922	7,761	8,713
Regular continence problems	3,708	4,259	4,755	5,342
Moderate or severe visual impairment	1,985	2,267	2,556	2,927
Moderate or severe hearing impairment	9,619	10,938	12,456	14,532
Learning Disability	467	540	600	658