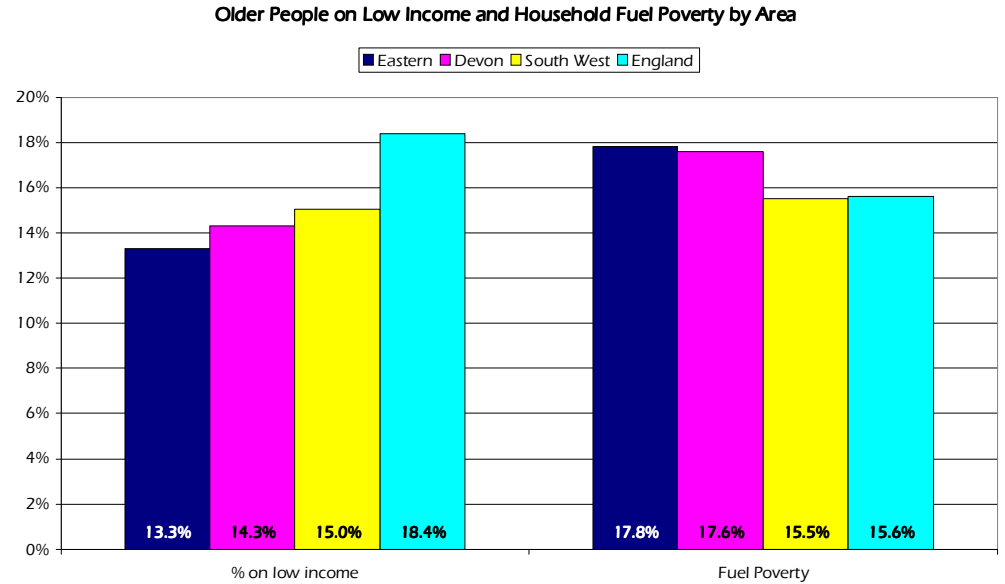
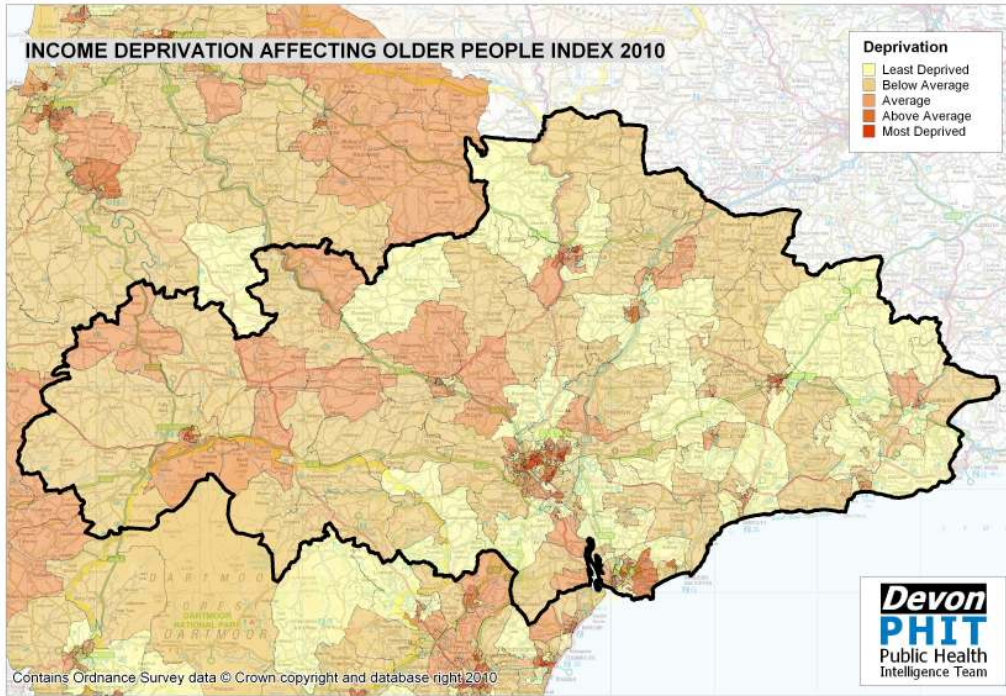
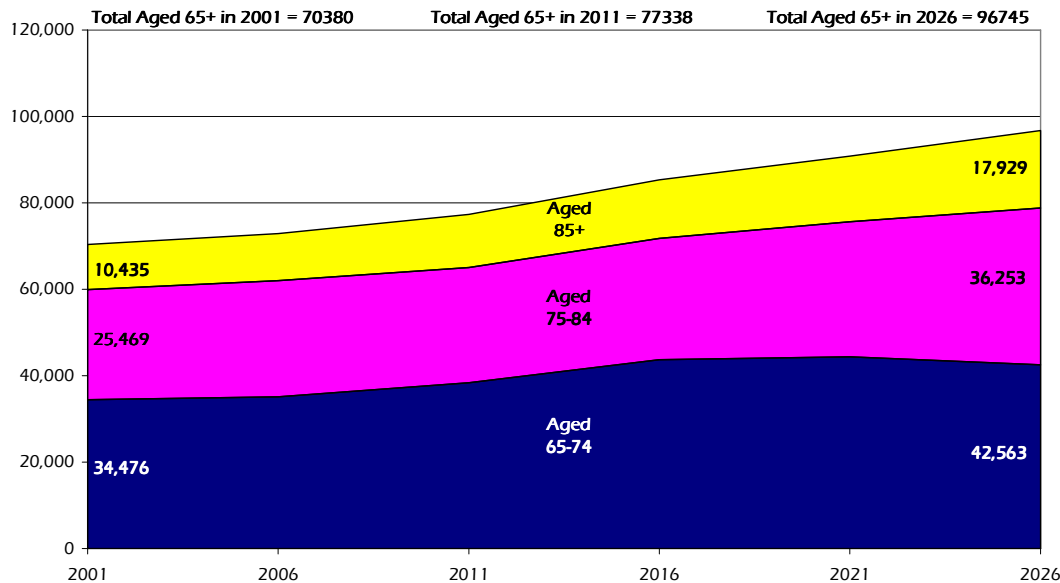


Eastern Devon Locality Older People Profile 2010/11



Projected Population Growth, Aged 65 and over, 2001 to 2026



Estimated number of people with selected health conditions, aged 65 years and over

Health Problem	2011	2016	2021	2026
Depression	6,825	7,657	8,324	9,053
Severe Depression	2,194	2,464	2,680	3,002
Dementia	5,326	5,899	6,690	7,725
Longstanding health condition caused by heart attack	3,859	4,345	4,742	5,207
Longstanding health condition caused by stroke	1,818	2,054	2,258	2,502
Longstanding health condition caused by bronchitis/emphysema	1,316	1,490	1,623	1,772
Fall in last 12 months	21,462	24,021	26,440	29,199
Regular continence problems	13,164	14,752	16,190	17,909
Moderate or severe visual impairment	7,105	7,913	8,744	9,834
Moderate or severe hearing impairment	34,998	38,818	43,231	49,441
Learning Disability	1,625	1,832	2,000	2,163